



THE UNIVERSITY
of ADELAIDE



JBI ANNUAL REPORT 2020

jbi.global



“IN A TIME
WHEN HAVING ACCESS
TO RELIABLE, TRUSTWORTHY
INFORMATION IS OF PARAMOUNT
IMPORTANCE WE HAVE TAKEN
GREAT PRIDE IN THE QUALITY OF
THE CONTENT AND RESOURCES
WE PRODUCE”

CONTENTS

4	2020 SNAPSHOT
6	EVOLVING AND THRIVING WITH CHANGE
8	OUR TEAM
10	STRATEGIC PLAN 2020 - 2024
12	BRIGHTER FUTURE
14	EBP RESOURCES
15	COVID-19 SPECIAL COLLECTION
16	JBIEBP DATABASE
18	JBIEVIDENCE SYNTHESIS
20	JBIEVIDENCE IMPLEMENTATION
22	JBISOFTWARE
24	GLOBAL REACH
25	JBICOLLABORATION
31	YEAR OF THE NURSE & MIDWIFE
32	JBENDORSEMENT
33	GROUPS WE WORK WITH
34	PHILANTHROPY
37	WORLD EBHC DAY
38	EDUCATION
39	EVIDENCE-BASED CLINICAL FELLOWSHIP PROGRAM
40	COMPREHENSIVE SYSTEMATIC REVIEW TRAINING PROGRAM
42	SCOPING REVIEW TRAINING
43	DIGITAL LEARNING
44	POSTGRADUATE RESEARCH DEGREES
46	RESEARCH
46	JBIMETHODOLOGICAL PROGRAM
48	CONSULTANCY
50	ORAL PRESENTATIONS BY JBI STAFF
51	PUBLICATIONS BY JBI STAFF
54	JBIFINANCIALS

2020 SNAPSHOT

The widespread impact of JBI, both in Australia and worldwide, is attributable to our local and global partnerships that ensure evidence-based activities are context-specific and driven by individuals and groups that understand their specific health environments.

COMPREHENSIVE JBI REBRAND



JBI METHODOLOGICAL PROGRAM



SCOPING REVIEW
NETWORK **LAUNCHED**
JBI MANUAL FOR EVIDENCE
IMPLEMENTATION **PUBLISHED**



PREDATORY PUBLISHING
PRACTICES **GROUP**
ESTABLISHED

COVID-19 SPECIAL COLLECTION



ACCESSED
880K TIMES

WORLD EBHC DAY FOUNDED BY JBI



98
COUNTRIES
ENGAGED

22
VIRTUAL EVENTS
IN 14 COUNTRIES

18.45M
TWITTER
IMPRESSIONS

13
LANGUAGES USED
IN POSTS GLOBALLY

JBI COLLABORATING ENTITIES



X6 NEW JBI
ENTITIES

JBI EVIDENCE SYNTHESIS



57%
INCREASE IN SITE
VISITS

70%
INCREASE IN FULL TEXT
VIEWS TO ARTICLES

JBI BEST PRACTICE INFORMATION SHEETS



6 LANGUAGES OTHER
THAN ENGLISH

JBI PUBLICATIONS



94
PUBLICATIONS
BY JBI STAFF

JBI EVIDENCE IMPLEMENTATION

1.53
IMPACT
FACTOR

41.6%
INCREASE IN
SITE VISITS



JBI CSRTP



1025
REGISTRATIONS GLOBALLY

EVOLVING AND THRIVING WITH CHANGE

In a year marked by the onset of COVID-19 and other global struggles, JBI characteristically doubled down, and the results achieved in 2020 are a testimony to the resilience, strength and quality of our people and those we partner with around the world. Unlike many organisations, we have been fortunate that COVID-19 has presented an opportunity for us to reinforce JBI's value proposition as it relates to the role of evidence to inform decisions in policy and practice.

In a time when having access to reliable, trustworthy information is of paramount importance, we have taken great pride in the quality of the content and resources we produce to support evidence-informed decision-making and evidence-based practice.

I am exceedingly proud of the way in which our team was able to pivot activity to ensure we could continue to meet our obligations to stakeholders across the globe. Their willingness to work in new and agile formats, to learn new technologies and to be flexible in their operations was truly a testimony to their dedication to JBI and our vision and mission.

I would also like to take this opportunity to thank all of our partners, collaborators, subscribers and students for their steadfast commitment to the JBI vision and mission as we navigate the path forward.

Prof Zoe Jordan
Executive Director, JBI

"IN A TIME WHEN HAVING ACCESS TO RELIABLE, TRUSTWORTHY INFORMATION IS OF PARAMOUNT IMPORTANCE WE HAVE TAKEN GREAT PRIDE IN THE QUALITY OF THE CONTENT AND RESOURCES WE PRODUCE"



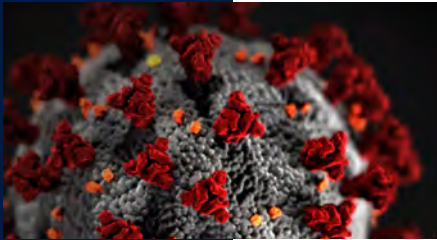
2020 HIGHLIGHTS

Wolters Kluwer Health Sales Meeting, Scottsdale, Arizona, USA

We were fortunate to travel to the US in February just before COVID-19 hit us in full force to attend the WKH Sales Meeting. This unique opportunity was the beginning of an important and meaningful dialogue supporting the sale of JBI EBP resources globally.

JBI New Horizons: Bigger, Better, **Brighter**
Exploding into 2020 with WKH

Prof Zoe Jordan (Executive Director)
Bianca Pilla (Director Global Relations)

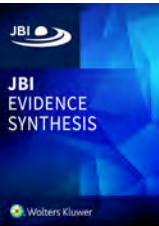


JBI COVID-19 Special Collection

In an effort to support decision-making in relation to COVID-19, JBI released a special collection of free access, evidence-based resources for health professionals and health services.

JBI Evidence Synthesis and JBI Evidence Implementation

JBI's two international journals were relaunched in 2020, each with a new name, new look and new focused scope.



World Evidence-Based Healthcare Day

We were proud to launch World Evidence-Based Healthcare Day on 20 October this year with the support of partners like Cochrane, the Campbell Collaboration, Guidelines International Network (GIN), Institute for Evidence Based Healthcare, the Africa Evidence Network, National Institute for Health and Care Excellence (NICE) and the American College of Physicians.

Digital Learning

JBI pivoted its flagship short courses to remote delivery to meet the increased demand for virtual evidence synthesis and evidence implementation training programs. We also developed and delivered monthly webinars, JBI LIVE and micro video content with the Ask JBI Evidence Synthesis series.



JBI Collaboration Annual General Meeting

Our annual general meeting with the JBI Collaboration certainly looked a little different to normal. We met over three days to accommodate different regions and time zones and covered both business and scientific content. The meetings were all very well attended, and we learnt much from our virtual experience.

OUR TEAM

GLOBAL RELATIONS DIVISION



Global Relations Manager
Bianca Pilla, BIntSt (Hons), MDevSt



Partnership Coordinator
Sarah Ravesteyn, BPsychSc



Administration Officer
Michelle Zaccaria



Communications Designer
Martin Williams



Communications Officer
Heather McCulloch, BA (Hons), GradDip
Comm (PR), MBA



Digital Engagement Assistant
Carolyn Phillips



Graphic Design Assistant
Angus Smith



Videography Assistant
Alyce Taylor



Executive Assistant
Jacque Teggerth

SYNTHESIS SCIENCE DIVISION



Director/Research Coordinator
Assoc Prof Edoardo Aromataris,
BSc (Hons), PhD



Senior Research Fellow
Dr Cindy Stern, BHSc (Hons), PhD



Research Fellow
Dr Janine Dizon, BSPT, MSPT, PhD



Managing Editor
Dagmara Riitano, BA, BHSc (Hons), MSc



Editorial Officer
Mara Lambert, BA



Editorial Officer
Melanie Dankel, BA, GradDip Ed Pub, AE



Editorial Assistant
Emilie Francis, BA

TRANSFER SCIENCE DIVISION



Director
Assoc Prof Zachary Munn, BMedRad,
GradDip HlthSc, PhD



Senior Research Fellow
Alexa McArthur, RN, RM, CN, MPhC



Research Fellow
Dr Timothy Barker, BSc (Hons), PhD



Research Fellow
Dr Danielle Pollock, BPsych (Hons), PhD



Training and Events Coordinator
Effie Minnema



Administration Officer
Judy Palmer



Digital Delivery Manager
Michael Marriott, BEng (CSE) (Hons)



Information Management Officer
Sarah Silver

IMPLEMENTATION SCIENCE DIVISION



Director
Assoc Prof Craig Lockwood, RN, BN,
GradDipClinNurs, MNSc, PhD



Senior Research Fellow
Dr Kylie Porritt, RN, MNSc, PhD



Administration Officer
Kim Dell, BHlthSc



Research Fellow
Dr Lucylynn Lizarondo, BPhysio, MPhysio,
MPsych, PhD



Research Fellow
Dr Sana Ishaque, MBBS, MSc (Clinical Epi),
PhD



Research Fellow
Tania Marin, BHSc, MPH



Research Fellow
Soumya, MBBS, MSc



Research Fellow
Dr Matthew Stephenson, BSc (Hons),
PhD



Research Fellow
Dr Ashley Whitehorn, BAppSc, BHlthSc
(Hons), PhD



Program Coordinator
Alex Mignone, BSocSc, DiplLaw

STRATEGIC PLAN 2020 – 2024

JBÍ NEW HORIZONS: BIGGER, BETTER, BRIGHTER

OUR VISION

Better evidence, better outcomes, brighter future

OUR MISSION

Promoting and supporting evidence-based healthcare

OUR VALUES

Leadership: The courage to shape a brighter future

Collaboration: Leverage diversity collective intellect

Quality: A focus on achieving excellence and value

Creativity: To be bold, brave and daring in all that we do

Sustainability: Ensuring we can achieve impact for future generations

OUR GOAL

To be a global leader in evidence-based healthcare, providing high quality resources to improve outcomes at the point of care

Impact Horizon

To ensure JBI generates impact by informing policy and practice and the global discourse as it relates to evidence-based healthcare.

Quality Horizon

To develop a robust strategy for continuous quality improvement of products, processes and services across all programs.

Viability Horizon

To build a sustainable business strategy that prioritises the long-term survival of JBI and enhances our capacity to endure and remain relevant to key stakeholders.

STRATEGIC PRIORITIES	FIVE YEAR GOALS	HORIZONS SUPPORTED		
		IMPACT	QUALITY	VIABILITY
PRIORITY 1: Engagement and Exchange (stakeholder communication) This strategy recognises that our success is manifest through our connections with other like-minded individuals and groups, whether through formal collaboration and partnership or through other forms of stakeholder consultation and engagement. It recognises the central importance of engagement and communication in the distinctive work we do and its relevance to clinical, educational, research and policy settings across international borders. It stresses the importance of exchanging ideas and the provision of education to all who are interested in learning from our 20 plus years of working in evidence-based healthcare. Identifying and interacting with the right local, national and international stakeholders will extend the depth and impact of our world-class research and further our capacity to promote and support evidence-based healthcare.	Stakeholder engagement is recognised across programs as being part of our corporate responsibility and knowledge exchange is a significant contributor to our ability to achieve our vision and mission with members and stakeholders.	✓	✓	✓
PRIORITY 2: Evidence and Empirics (scholarship and research) We place high value on the creation of an intellectual environment that contributes both scientifically and pragmatically to the evidence-based agenda. With this in mind, JBI will seek to reassert our ambition to be a leading national and international leader through methodological development and other research related to the pursuit of evidence-based healthcare, acknowledging the boost in research performance that this will require. This strategic plan affirms our commitment to, and support for, a diversity of perspectives and the importance of investigating all aspects of evidence-based healthcare (synthesis, transfer and implementation) as well as strategies for collaboration globally.	All programs are underpinned by a robust program of empirics and scholarly investigation to drive methodological development related to furthering the “science” of evidence-based healthcare.	✓	✓	✓

STRATEGIC PRIORITIES	FIVE YEAR GOALS	HORIZONS SUPPORTED		
		IMPACT	QUALITY	VIABILITY
PRIORITY 3: Evaluation and Excellence (continuous quality improvement) Organisational stability and growth must be based upon maintaining a focus on improvement. The use of diverse evidence to inform decision-making remains central to JBI, both scientifically and organisationally. Evidence enables us to discover, predict, visualise, collaborate, model and manage our business and to provide high quality, reliable information to others. This strategy aims to build confidence, capability and capacity across program areas through robust program evaluation, quality improvement and the production and use of data to inform how we take our business and our resources forward. Our desire is to sharpen decision making in unpredictable contexts both internally and externally in order to create impact at the point of care.	All programs and resources are evaluated on a regular basis and strategies identified to overcome barriers and utilise facilitators to ensure financial, operational and cultural excellence.	✓	✓	✓
PRIORITY 4: Evolution and Expansion (innovation for the future) The information (knowledge/evidence) economy is now well established and continues to grow at a staggering rate. This means that there are significant opportunities and potential for expansion and JBI is seeking to invest for growth, following a considerable but important period of consolidation. We have a focussed and scalable business model that is agile and ready to respond to end user needs. We are in a strong position to innovate and to create new, imaginative, dynamic resources that add value to key stakeholders working across the evidence-based healthcare community.	JBI is an organisation focussed on growth with a renewed focus on creativity and innovation (for products, processes and systems) in order to ensure we continue to be responsive and competitive.	✓	✓	✓

OUR VISION OF BETTER EVIDENCE, BETTER OUTCOMES AND BRIGHTER FUTURE (FOR EVERYONE) IS OUR DRIVING FORCE

10 WAYS WE WILL WIN

1. Engaging with key strategic stakeholders
2. Exchanging ideas with cognate partners
3. Evaluating our business and the quality of our resources
4. Expanding our work with disadvantaged communities
5. Escalating our content and IT development activity
6. Extending our scholarly/ methodological work
7. Enhancing our international profile
8. Exploring new opportunities to promote and support EBHC
9. Establishing ourselves as the number one EBHC provider
10. Evolving our business for new horizons

LONG TERM OUTCOME

Better evidence for better outcomes and a brighter future for communities globally.

BRIGHTER FUTURE

“JUST AS THE GLOBAL EVIDENCE COMMUNITY MUST CONTINUE TO EVOLVE TO REMAIN AT THE FOREFRONT OF VARYING AND DISPARATE GLOBAL HEALTH NEEDS, WE NEEDED TO RE-EXAMINE OUR PURPOSE AND HOW WE CAN DELIVER NEW VALUE IN THE WORLD OF EVIDENCE-BASED HEALTHCARE, WHERE AGILITY AND DIGITAL EVOLUTION ARE SYNONYMOUS WITH INNOVATION.” Prof Zoe Jordan

JBIs rebrand in 2020 was a transformation that went beyond the cosmetic, driven by JBI’s new vision of a Brighter Future.

Renaming the Joanna Briggs Institute to **JB**I in recognition of how the organisation is known internationally today

JBI

Refreshing and strengthening JBI’s logo in recognition of JBI’s new streamlined and agile business operations



Reinventing JBI’s website, complete with new URL, jbi.global, to reflect JBI’s new visual identity



Renewing the partnership with international publisher Wolters Kluwer Health, with the signing of a five-year commercial contract



Refocusing JBI’s two international journals and launching each with a new name, new look and new scope: **JB**I Evidence Synthesis and **JB**I Evidence Implementation



Re-engineering JBI’s software to conduct systematic reviews, **JB**I SUMARI, for enhanced efficiency and flexibility, and to enable individual subscriptions

JBI SUMARI

Rebuilding JBI’s software, **JB**I PACES, to conduct clinical audits

JBI PACES

Reinvigorating the **JB**I EBP Database and redesigning JBI’s evidence-based point-of-care resources to improve end-user experience

JBI EBP DATABASE



**BETTER EVIDENCE
BETTER OUTCOMES
BRIGHTER FUTURE**



**BETTER EVIDENCE
BETTER OUTCOMES
BRIGHTER FUTURE**



**BETTER EVIDENCE | BETTER OUTCOMES
BRIGHTER FUTURE**



The launch of JBI’s rebrand was supported by a two-week social media campaign, **#BrighterFuture**, in August 2020.

The **#BrighterFuture** campaign highlighted the strength, diversity and passion of the JBI Collaboration’s work towards our collective vision of Better Evidence, Better Outcomes and a Brighter Future for communities globally.

JBIs 75+ Collaborating Entities around the world actively engaged in the **#BrighterFuture** campaign.

49 JBI Collaborating Entities submitted short statements and photos to convey how they contribute to a Brighter Future with JBI.

403 posts across five social media platforms comprised the campaign, which achieved 73,331 impressions across these platforms and reached more than 60,000 people.



**49 ENTITIES
CONTRIBUTED TO A
#BrighterFuture**



**73,000+
IMPRESSIONS
60,000+
VIEWS**

EBP RESOURCES

JBIC has developed a collection of world-class resources driven by the needs of health professionals and consumers worldwide. Through JBI's partnership with international publishing house Wolters Kluwer Health, JBI evidence-based resources are in one easy-to-use online location.

COVID-19 SPECIAL COLLECTION

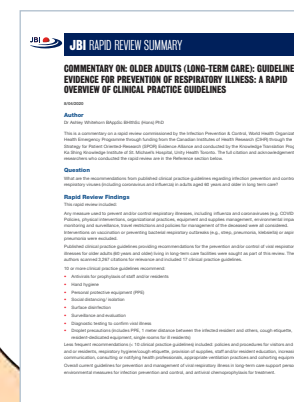
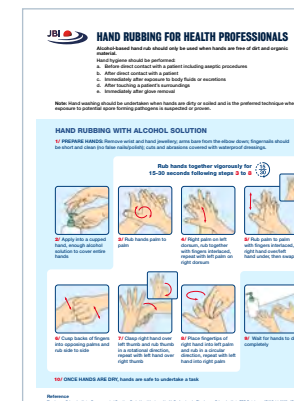
In response to the COVID-19 pandemic in 2020, JBI released new evidence-based recommendations to inform and guide healthcare decision-making at the point of care.

The COVID-19 Special Collection, launched in March 2020, summarises current best evidence and provides detailed recommendations for practice. The core focus of the Collection is on infection prevention and control measures for organisations and individuals.

Point-of-care resources were disseminated to health professionals, policymakers and decision-makers locally and globally via JBI's commercial partner Wolters Kluwer Health, as well as JBI's 75 collaborating healthcare and university partners in 36 countries.



879,366 PAGE VISITS
23,998 DOWNLOADS



The Collection and its contents were translated into Mandarin to increase accessibility of the evidence-based information for point-of-care use by health professionals and healthcare organisations.

From 27 March to 31 December 2020, the COVID-19 Special Collection attracted:

- 879,366 page visits
- 23,998 downloads

The COVID-19 Special Collection includes rapid reviews produced by the Queen's Collaboration of HealthCare Quality: A JBI Centre of Excellence in Canada.

JBI EBP DATABASE

Providing access to JBI evidence-based resources in clinical settings enables organizations to seamlessly integrate evidence-based practice and empowers clinical staff to close the quality and safety gap by using the latest evidence in clinical decision making.

JBI EBP DATABASE

New EBP resources developed in 2020	Total EBP resources, end 2020
Evidence Summaries: 289	Evidence Summaries: 3855
Recommended Practice: 7	Recommended Practice: 812
Best Practice Information Sheets: 12	Best Practice Information Sheets: 35
	Audit Criteria/Quality indicators: 520

The JBI EBP Database is an online resource that includes high-quality, relevant, up-to-date evidence-based information and guidance for health professionals to inform decisions made at the point of care. It is ranked equal first with UpToDate, and above BMJ Best Practice, DynaMed and 14 others for:

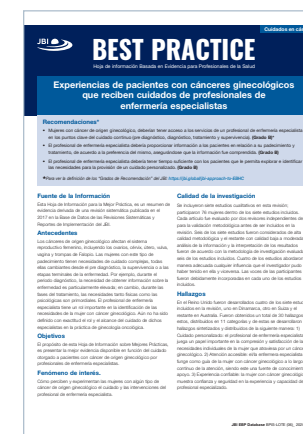
- Quality and reliability of editorial processes
- Evidence-based content development methodology.

Content

Covering a wide range of medical, nursing, and allied health specialties, the JBI EBP Database provides more than 5000 resources for evidence-based practice, which are analysed and appraised by global expert reviewers.

Twenty speciality areas are covered, with topics selected by international clinical review committees who recommend key priority topics to ensure impact on practice.

Content is updated every 12 to 18 months (earlier if the topic has an active field of research) following JBI's rigorous methodology and editorial processes.



Languages other than English

In 2020, JBI introduced Best Practice Information Sheets that are translated into six languages other than English: Hebrew, Turkish, Italian, French, Spanish and Portuguese. This new program of work is aimed at creating market awareness in regions with low-level dissemination or awareness of JBI, or where resource access is currently low.



JBI EBP Database Editorial Office

The online JBI EBP Database Editorial Office was developed in 2020 and released on JBI's global wiki site.

The comprehensive resource lists the groups and entities involved in producing and updating content for the JBI EBP Database, and includes JBI methodological guidance, as well as templates and resources for content management and development. Applications to join Expert Reference Groups and to become Scientific Writers or Field Collaborators are submitted via the online JBI EBP Database Editorial Office.



Scientific Writer Program

A sustained social media campaign led to interest from around the world to join the Scientific Writer Program and resulted in 30 new writers applying to join the program.

In 2020, a total of 54 registered Scientific Writers updated Evidence Summaries following a rigorous methodological process prior to publication in the JBI EBP Database.



5000+

RESOURCES PROVIDED BY
JBI EBP DATABASE

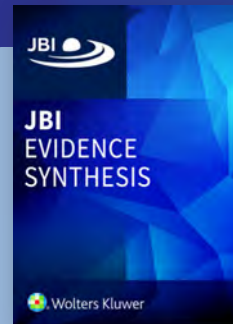
289

NEW EVIDENCE
SUMMARIES

54

REGISTERED
SCIENTIFIC WRITERS

JB1 EVIDENCE SYNTHESIS



“JB1 Evidence Synthesis a refereed, online journal that publishes systematic and scoping reviews and protocols of healthcare research following JBI methodology.”

Assoc Prof Edoardo Aromataris
Editor in Chief



56.9%
INCREASE
IN SITE VISITS

56%
INCREASE
IN UNIQUE VISITORS

70%
INCREASE
IN FULL TEXT VIEWS

49
COUNTRIES
SUBMISSIONS RECEIVED

The *JB1 Database of Systematic Reviews and Implementation Reports* was relaunched with a new name, new look and new scope in January 2020.

The change of name to *JB1 Evidence Synthesis* better reflects the scope of the journal and better supports JBI's synthesis science program. It also reflects the refocus of JBI's strategic work towards the Vision: *Better evidence. Better outcomes. Brighter future.*

In line with its new focus, *JB1 Evidence Synthesis* published its first ‘methodology’ special issue in Volume 18, Issue 10, 2020. This issue presented some of the latest innovations in JBI in systematic review methodology.

Other special issues, each presented by international co-guest editors, included an issue on “Discharge planning”, Volume 18, Issue 2 and also “Aged care” Volume 18, Issue 4.

Key metrics from the journal platform

2020 visits = 384,576 (up from 245,132 in 2019; a 56.9% increase)

2020 unique visitors = 286,653 (up from 189,820 in 2019; a 56% increase)

2020 full text views to articles = 248,499 (up from 146,076 in 2019; a 70% increase).

Submissions

The journal continued to gain international appeal in 2020. Authors from 49 countries submitted to the journal, an increase from 39 countries in 2019. Overall, there was a 33% increase in submissions from 2019 to 2020.

	2020	2019
Total Submissions	617	476
Submissions Accepted	161	191
Submissions Rejected	341	189
Acceptance Rate	32%	50%

COVID-19 Collection

In response to the COVID-19 pandemic, *JB1 Evidence Synthesis* released a collection of free access systematic reviews relevant to the challenges posed by COVID-19.

The collection includes systematic reviews that focus on infection control, as well as supporting clinician well-being and offering strategies to manage fatigue, moral decision-making, grief and aggressive patients. Content also extends to systematic reviews that address strategies to help people better cope in isolation, manage their own health, and maintain psychological well-being.



“The review provides important insights into the subjective needs of persons with mental illness who undertake outdoor nature-based TR.”

Caroline Pictor



EDITOR'S CHOICE 2020

- **Updated methodological guidance for the conduct of scoping reviews**
Peters, Micah D.J.; Marnie, Casey; Tricco, Andrea C.; Pollock, Danielle; Munn, Zachary; Alexander, Lyndsay; McInerney, Patricia; Godfrey, Christina M.; Khalil, Hanan
- **Methodological guidance for the conduct of mixed methods systematic reviews**
Stern, Cindy; Lizarondo, Lucyllynn; Carrier, Judith; Godfrey, Christina; Rieger, Kendra; Salmond, Susan; Apóstolo, João; Kirkpatrick, Pamela; Loveday, Heather
- **Methodological quality of case series studies: an introduction to the JBI critical appraisal tool**
Munn, Zachary; Barker, Timothy Hugh; Moola, Sandeep; Tufanaru, Catalin; Stern, Cindy; McArthur, Alexa; Stephenson, Matthew; Aromataris, Edoardo
- **Intermittent fasting interventions for treatment of overweight and obesity in adults: a systematic review and meta-analysis**
Harris, Leanne; Hamilton, Sharon; Azevedo, Liane B.; Olajide, Joan; De Brún, Caroline; Waller, Gillian; Whittaker, Vicki; Sharp, Tracey; Lean, Mike; Hankey, Catherine; Ellis, Louisa
- **Effectiveness of vibratory stimulation on needle-related procedural pain in children: a systematic review**
Ueki, Shingo; Yamagami, Yuki; Makimoto, Kiyoko
- **Interventions including a nutrition component aimed at managing gestational weight gain or postpartum weight retention: a systematic review and meta-analysis**
Vincze, Lisa; Rollo, Megan; Hutchesson, Melinda; Hauck, Yvonne; MacDonald-Wicks, Lesley; Wood, Lisa; Callister, Robin; Collins, Clare
- **New parents' experiences of postpartum depression: a systematic review of qualitative evidence**
Holopainen, Arja; Hakulinen, Tuovi



“JBI Evidence Implementation is a refereed, online journal that focuses on evidence for implementation and closing the evidence-to-practice gap in healthcare.”

Assoc Prof Craig Lockwood,
Co-Editor in Chief



Hanan Khalil,
Co-Editor in Chief



**37.7%
INCREASE
IN PAGE VIEWS**



**41.6%
INCREASE
IN SITE VISITS**



**29%
INCREASE
IN SUBMISSIONS**

JBI EVIDENCE IMPLEMENTATION

The former *International Journal of Evidence-Based Healthcare* underwent a dramatic transformation to become *JBI Evidence Implementation*.



The new-name, new-look journal was launched in September 2020, with a refined scope. The re-branded journal focuses on evidence implementation and includes aspects of context analysis, facilitation and evaluation from diverse methodological perspectives, such as feasibility, appropriateness, meaningfulness and effectiveness (FAME). In 2020, the journal's impact factor was measured at 1.930.

Key metrics from the journal platform

2020 page views = 140,991 (up from 102,384 in 2019; a 37.7% increase)

2020 visits = 99,643 (up from 70,356 in 2019; a 41.6% increase)

2020 visitors = 79,096 (up from 57,553 in 2019; a 37.4% increase)

Submissions

In 2020 the journal drew a 29% increase in submissions.

	2020	2019
Total Submissions	179	138
Submissions Accepted	58	56
Submissions Rejected	108	70
Acceptance Rate	33%	44%

Knowledge Translation Resources

As part of the journal's transformation, a new podcast and video series were created and made accessible via the journal's website. Both series provide commentary by authors and peer reviewers on current articles published in the journal.

Twitter

The journal's Twitter account was revitalised, publishing content relating to evidence implementation. The aim of the Twitter account is to disseminate *JBI Evidence Implementation* content and increase readership of the journal. In 2020, follower numbers increased ten-fold.



EDITOR'S CHOICE 2020

- **Completeness of intervention reporting in neurology randomized controlled trials: a retrospective, cross-sectional study**
Roberts, William; Beavers, Craig; Jellison, Samuel; Vassar, Matt
- **Patients' and physicians' perspectives and experiences on the quality of medical consultations: a qualitative study**
Bahadori, Mohammadkarim; Yaghoubi, Maryam; Haghgoshyie, Elaheh; Ghasemi, Matina; Hasanpoor, Edris
- **Relationships between workload perception, burnout, and intent to leave among medical-surgical nurses**
Phillips, Carswella
- **An evaluation of a training intervention to support the use of evidence in healthcare commissioning in England**
Sabey, Abigail
- **JBI Evidence Implementation as the myelin sheath to the action potential of implementation science**
Lockwood, Craig; Khalil, Hanan
- **Nursing documentation for chemotherapy in a university hospital's bone marrow transplant unit: a best practice implementation project**
dos Santos, Kelli Borges; Campos, Caroline; de São José Perrone, Ana Carolina Amaral; de Araújo Silva Vieira, Camila; Coelho, Davi Pereira; Hallack-Neto, Abrahão Elias; Lockwood, Craig; de Araújo Püschel, Vilanice Alves
- **Reducing adverse medication events in mental health: Australian National Survey**
Gadzhanova, Svetla; Roughead, Elizabeth; Lowy, Helen; O'Connor, Daniel

JB I SOFTWARE

JB I's organisation-wide IT redevelopment project is designed to ensure an efficient IT ecosystem across applications and systems.

JB I's organisation-wide IT redevelopment project (encompassing reporting, administration, single sign-on, marketing and sales, Project JB I Evolve) is designed to ensure an efficient IT ecosystem with integrated systems and semantic data allowing sharing of data across applications and systems.

Project JB I Evolve

Significant progress was made on Project JB I Evolve, which is designed to:

- reduce manual effort
- enable accurate tracking and collection of data
- centralise all data into one up-to-date, accurate repository
- create single sign-on and central JB I accounts for all users (customers, staff, JB I Collaboration members etc)
- enhance JB I's reputation with stakeholders as a developer of state-of-the-art technology.

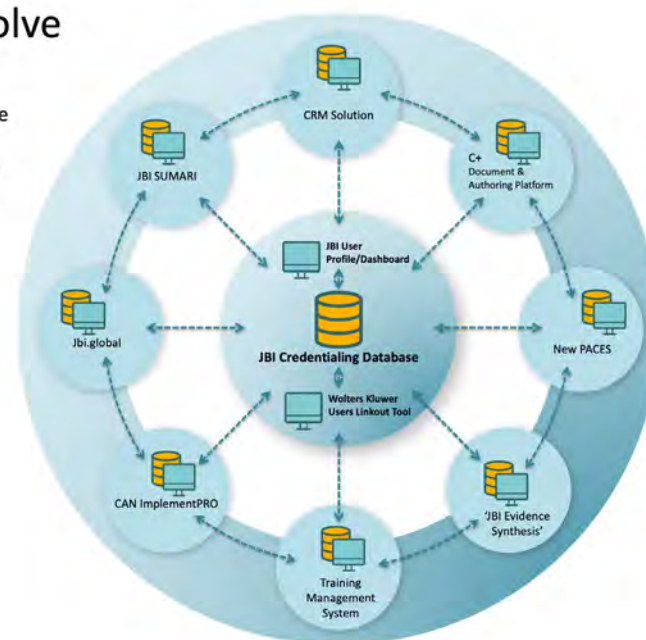
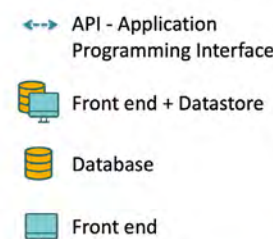
MYJB I

In 2020, JB I launched the first release of the JB I single sign-on and eventual membership platform, MYJB I. MYJB I was released in 2020 to facilitate individual sales and subscriptions to JB I SUMARI.

JB I COnNECT+

In 2020, work on the initial release of the new JB I COnNECT+ (Clinical Online Network of Evidence for Care and Therapeutics) was completed. JB I COnNECT+ is a web-based facility that provides users with resources and tools to search, appraise, summarise, embed, utilise and evaluate evidence-based information. The new system replaces the previous system, which was retired in 2020, and is designed to facilitate more efficient creation and publication of JB I point-of-care documents.

Project JB I Evolve



JB I SUMARI

JB I SUMARI (System for the Unified Management, Assessment and Review of Information) streamlines the entire systematic review process, from protocol to report.

In 2020, significant improvements and new features were introduced, in addition to the ability to offer and process individual subscriptions to JB I SUMARI, and the opening of a payment gateway for individual subscriptions.

These improvements included:

- Added support for .RIS file types and improved support for .XML file types: JB I SUMARI can accept study citation details that have been exported and saved as both .RIS and .XML file types. This allows users to export the results of their search directly from the database straight into JB I SUMARI.

- Added ability to display the abstract of studies imported to JB I SUMARI: The abstracts of imported studies can now be viewed in JB I SUMARI, facilitating the screening process for users.

- Improved formatting of forest plots: The forest plots generated for both comparative and proportional meta-analyses underwent a major overhaul to improve the look, feel and readability of the results presented. These changes included improved scaling, appropriate sizing of study weights and appearance of the numeric results.

- JB I SUMARI is the only software that supports 10 different types of reviews, and provides tools such as the report builder with its in-built citation management and automatic generation of appendices, and superior user interface that supports three different types of data synthesis, making meta-analysis and qualitative synthesis simple.

JB I PACES

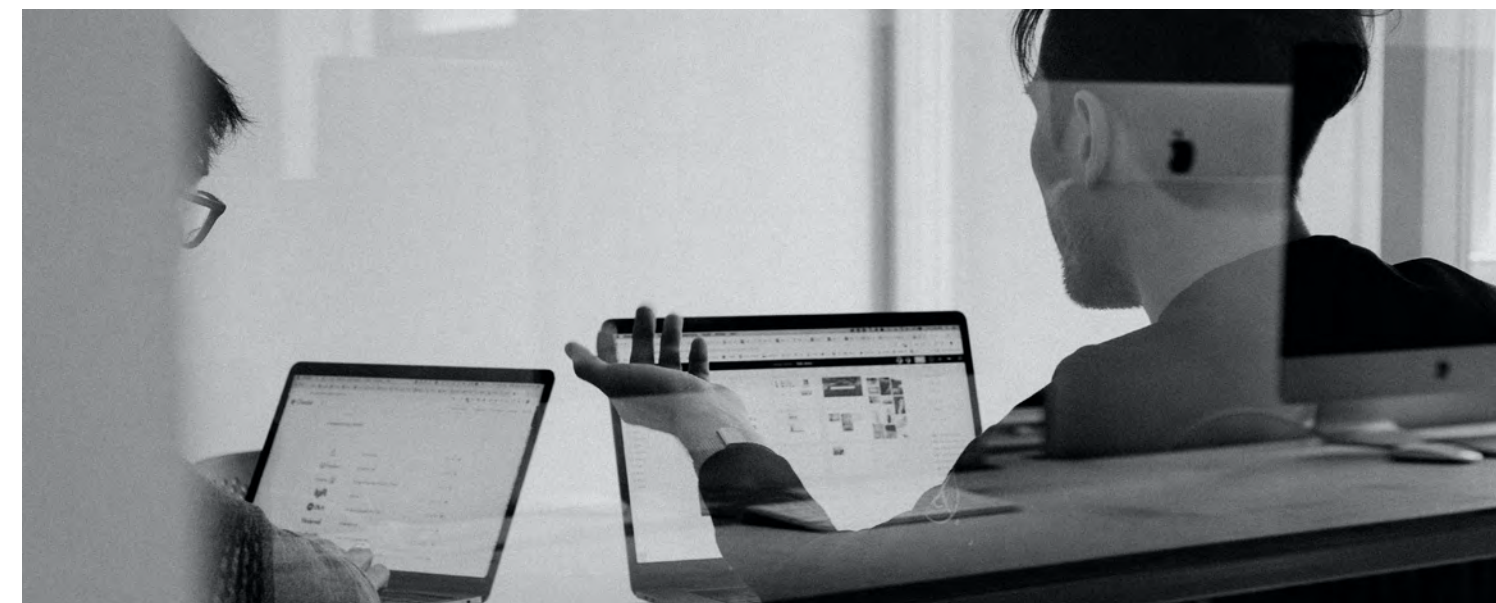
JB I PACES (Practical Application of Clinical Evidence System) is fully integrated with the JB I EBP Database and is one of the only applications that facilitates simple, flexible quality improvement and evidence implementation projects, in addition to other types of primary research.

JB I PACES was completely rebuilt in 2020 with new features and capabilities ensuring it is intuitive, more flexible and customisable.

The new features released in 2020 include the ability to:

- modify or create individual outcome measurements, quality indicators and audit criteria
- export data into a variety of formats
- customise the presentation of reports and run multiple analyses.

JB I aims for an internal release of JB I PACES by the middle of 2021, with a commercial release via Wolters Kluwer shortly thereafter.





GLOBAL REACH

THE JBIC HARNESSES THE DIVERSE STRENGTH OF ITS MEMBERS ... EMPOWERING THEM TO WORK TOGETHER, COMMUNICATE AND SHARE KNOWLEDGE

JBIC COLLABORATION

JBIC's global collaborative evidence network, the JBI Collaboration (JBIC), spans 70+ universities, hospitals, health facilities and NGOs in 38 countries who each lead evidence-based initiatives in their community or region, directed by the knowledge needs of local clinicians and consumers. The JBIC consists of JBI Centres of Excellence and Affiliated Groups that are driven by a unified purpose to contribute to improvements in the quality and outcomes of healthcare globally through the delivery of high-quality programs of evidence synthesis, transfer and implementation. The JBIC harnesses the diverse strength of its members to benefit and connect members in new and innovative ways, empowering them to work together, communicate and share knowledge, while leveraging existing resources to tackle large and complex problems in healthcare globally using JBI's approach to evidence-based healthcare.

20% INCREASE
IN PUBLICATIONS
BY COLLABORATING
ENTITIES

For members of the JBIC, 2020 was a particularly challenging year, with most needing to pivot their focus to address the challenges of the COVID-19 pandemic, including the development and implementation of evidence-based methods, strategies and approaches to COVID-19. Despite the setbacks and challenges throughout the year, there was a surge in activity from most Collaborating Entities as they worked to meet the needs of their local communities, including a 20% increase in the number of JBI systematic reviews and JBI implementation reports published.

As a global collaboration, the JBIC maintained its strength and its willingness to share and collaborate with colleagues from around the world in the promotion and support of evidence-based healthcare.

We welcomed six new Affiliated Groups in 2020 from Ethiopia, PR China, Romania, Switzerland/Germany and the USA to the JBIC. We are proud to acknowledge 38 Centres of Excellence and 39 Affiliated Groups as a part of the global JBI family. It was with deep regret that the JBI Colloquium in Shanghai was cancelled due to COVID-19, however, the 64th JBIC Meeting was held virtually in November for the first time, where we met with 117 JBIC Directors, Convenors, Deputies and Staff across three days and five regions to plan the way forward for 2021.

6

NEW GROUPS

38

CENTRES
OF EXCELLENCE

39

AFFILIATED GROUPS



AFRICA



The JBI African region consists of seven JBI Centres of Excellence and Affiliated Groups in five countries.

Africa Entities

Cameroon	Yaounde Bamenda
Ethiopia	Addis Ababa Jimma
Ghana	Kintampo
Kenya	Nairobi
South Africa	Johannesburg

Regional JBI Activity Matrix Outputs

- Trained 151 participants in JBI's Comprehensive Systematic Review Program and 31 participants in JBI's Evidence-Based Clinical Fellowship Program
- Two JBI systematic reviews were accepted for publication in *JBI Evidence Synthesis*
- Three Implementation Reports accepted for publication in *JBI Evidence Synthesis* and *JBI Evidence Implementation*
- Mentored three prospective JBI Collaborating Entities in three countries
- Contributed to five JBI Methodology Groups

JBI African Regional Chair

Dr Yeetey Enuameh, The Kintampo Health Research Centre, Africa.



7

COLLABORATING ENTITIES

AMERICAS



The JBI Americas region consists of 17 JBI Centres of Excellence and Affiliated Groups in seven countries.

Americas Entities

Brazil	São Paulo
Canada	Halifax, NS Kingston, ON Saint John, NB St. John's, NL Victoria, BC
Costa Rica	San José
Peru/Colombia/Chile	Lima
USA	Chicago x2 Fort Worth, TX Hammond, IN Henderson, NV Jackson, MS New Orleans, LA Newark, NJ San Francisco, CA Stanford, CA

Regional JBI Activity Matrix Outputs

- Trained 243 participants in JBI's Comprehensive Systematic Review Training Program and four participants in JBI's Evidence-based Clinical Fellowship Program
- 14 JBI systematic reviews were accepted for publication in *JBI Evidence Synthesis*
- Three JBI implementation reports were accepted for publication in *JBI Evidence Synthesis* and *JBI Evidence Implementation*
- Mentored four JBI Affiliated Groups and prospective JBI Collaborating Entities in two countries
- Contributed to 10 JBI Methodology Groups

JBI Americas Regional Chair

Dr Marsha Bennett, The Louisiana Centre for Promotion of Optimal Health Outcomes, Canada.



17

COLLABORATING ENTITIES

ASIA

The JBI Asia region consists of 22 JBI Centres of Excellence and Affiliated Groups in eight countries.

Asia Entities

India	Andhra Pradesh Gujarat Kerala
Japan	Chiba Osaka Otamae Hyogo
KoreaSeoul
MyanmarYangon
PR China	Beijing x2 Changsha Guangdong Guangzhou x2 Qingdao Shanghai x2
Singapore	Singapore x2
Taiwan	Taipei
Thailand	Chiang Mai Udon Thani

Regional JBIC Activity Matrix Outputs

- Trained 259 participants in JBI's Comprehensive Systematic Review Training Program and 50 in JBI's Evidence-based Clinical Fellowship Program
- One JBI systematic review was accepted for publication in JBI Evidence Synthesis
- 15 JBI implementation reports accepted for publication in *JBI Evidence Synthesis* and *JBI Evidence Implementation*
- Contributed to three JBI Methodology Groups

JBI Asia Regional Chair

Prof Hu Yan, Fudan University Centre for Evidence-based Nursing, PR China.



AUSTRALASIA

The JBI Australasia region consists of eight JBI Centres of Excellence and Affiliated Groups.

Australasia Entities

Australia	Adelaide Alice Springs Brisbane Newcastle Perth x2 Sydney Wollongong
---------------------	--

Regional JBIC Activity Matrix Outputs

- Trained 91 participants in JBI's Comprehensive Systematic Review Training Program
- Six JBI systematic reviews accepted for publication in *JBI Evidence Synthesis*
- Mentored four JBI Affiliated Groups and prospective JBI Collaborating Entities in two countries
- Contributed to seven JBI Methodology Groups

JBI Australasia Regional Chair

Co-Chair Dr Rick Wiechula, The Centre for Evidence-based Practice South Australia (CEPSA) and Dr Kate Kynoch, The Queensland Centre for Evidence Based Nursing and Midwifery, Australia.

8

COLLABORATING ENTITIES



EUROPE

The JBI European region consists of 20 JBI Centres of Excellence and Affiliated Groups in 16 Countries.

Europe Entities

Belgium	Leuven
Czech Republic	Olomouc
Denmark	Aarhus
England	London Nottingham Middlesbrough Plymouth
Finland	Helsinki
Iran	Tabriz
Ireland	Dublin
Italy	Rome
Norway	Ås
Portugal	Coimbra
Romania	Bucharest x2
Scotland	Aberdeen
Spain	Madrid
Switzerland	Lausanne
Switzerland/Germany	Luzern
Wales	Cardiff

Regional JBIC Activity Matrix Outputs

- Trained 152 participants in JBI's Comprehensive Systematic Review Training Program and 11 in JBI's Evidence-based Clinical Fellowship Program.
- 11 JBI systematic reviews accepted for publication in *JBI Evidence Synthesis*
- Two JBI implementation reports accepted for publication in *JBI Evidence Synthesis* and *JBI Evidence Implementation*
- Mentored one prospective JBI Collaborating Entity
- Contributed to 10 JBI Methodology Groups

JBI European Regional Chair

Prof Anne-Sylvie Ramelet, Bureau d'Echange des Savoirs pour des pratiques exemplaires de soins (BEST), Switzerland.



YEAR OF THE NURSE & MIDWIFE

In recognition of 2020 as the International Year of the Nurse and Midwife, JBI led a five-week social media campaign to recognise and celebrate nurses and midwives across the globe.

COVID-19 has seen nurses around the world do what nurses always do: step up. Nurses are at the centre of efforts to prevent, contain and manage this global health emergency. The World Health Organization dedicated 2020 as the #YearOfTheNurseAndMidwife to celebrate the work of nurses and midwives and remind world leaders of the critical role they play. JBI's five-week campaign was launched on World Health Day on 7 April, highlighted International Day of the Midwife on 5 May and culminated with International Nurses Day on 12 May.

Twenty-five JBI Collaborating Entities participated in the campaign to thank their teams and colleagues, with a focus on their efforts during COVID-19. Posts were in English and the preferred language of JBIC Entities, which contributed to record engagement levels across social media.

The campaign comprised almost 500 posts across four social media platforms, achieved 63,439 impressions and reached more than 50,000 people.



JBI Endorsement is awarded to healthcare organisations that demonstrate commitment to evidence-based healthcare and an organisational-wide culture of innovation and excellence.

JBI ENDORSEMENT

In 2020, **Nanfang Hospital**, Southern Medical University in Guangdong Province (PR China), achieved JBI Endorsed status, joining **Liverpool Hospital** in New South Wales (Australia); **Mater Health** in Queensland (Australia); **Zhongshan Hospital**, Fudan University in Shanghai (PR China); **Lausanne University Hospital** in Lausanne (Switzerland); and **University Hospital of São Paulo** in São Paulo (Brazil).



Expressions of interest were received from healthcare facilities in Iran, Taiwan and the USA, however, the process of seeking JBI Endorsement was delayed as these facilities focused their attention on providing healthcare services during the COVID-19 pandemic.

The JBI Endorsement Unit redirected its efforts to evaluate the existing application process, criteria and standards, benefits/incentives and fees to inform substantive developments of the program. This led to the following:

- A new messaging strategy for JBI Endorsement that highlights benefits in terms of achieving robust process for quality improvement, ongoing mentoring and support for professional development, and delivery of high-quality, evidence-based healthcare
- The development of a JBI Endorsement report for existing JBI Endorsed organisations wishing to renew their Endorsement status. The report presents the findings of the assessment conducted by the JBI Endorsement Unit and highlights the milestones and achievements of the health organisation along with the recommendations of the Endorsement Unit for further evidence implementation work and quality improvement
- A comprehensive plan to expand the JBI Endorsement program by adapting a programmatic approach that targets a specific cohort of healthcare facilities and practitioners (e.g. aged care). This approach will capitalise on collaborative work and consensus-based decision-making on priority clinical areas.



GROUPS WE WORK WITH

In 2020, JBI played an active role in creating partnerships, collaborating with leading global organisations and leading a series of regional groups and organising committees internationally.

JBI Adelaide GRADE Centre



The JBI Adelaide GRADE Centre, established in November 2016, was the first GRADE centre in Australia and New Zealand and has acted as a central hub of GRADE related research and teaching in the region. In addition, it was the first GRADE Centre to be established within the JBI Collaboration, and as such supports and promotes the use of GRADE amongst this group. The centre offers training in GRADE methods and contributes to the scientific development of GRADE methods, focusing on promoting the use of GRADE for systematic reviews and guideline development.

The Centre's mission is to train, promote, disseminate and implement GRADE approaches within and across the systematic review and guideline development community globally. Three GRADE workshops were conducted by remote attendance for a total of 54 participants in 2020. The Centre also published a substantial and collaborative research project with the Melbourne GRADE Centre that details how GRADE has been used in recent Australian Clinical Practice Guidelines.

For more information, visit <https://jbi.global/grade>

Global Evidence Summit



Planning for the Global Evidence Summit 2021 in Prague was well underway until the advent of the COVID-19 pandemic.

The Global Organising Committee (JBI, Cochrane, GIN and the Campbell Collaboration) and host institution, the Czech National Centre for Evidence Based Healthcare and Knowledge Translation, agreed to postpone the Global Evidence Summit until 2–6 October 2023.

World Evidence-Based Healthcare Day



The inaugural World Evidence-Based Healthcare Day, held on 20 October 2020, was led by JBI in partnership with Cochrane, Campbell Collaboration, Institute for Evidence-Based Healthcare, Africa Evidence Network, NICE, GIN and American College of Physicians. The success of World Evidence-Based Healthcare Day in 2020 has secured this global event's future as an annual event.

Cochrane Nursing Care Field



The Cochrane Nursing Care Field (CNCF) is managed by JBI. The CNCF produces 'Cochrane Corner' (summaries of recent nursing-care-relevant Cochrane reviews) that are published regularly in the CNCF's international collaborating nursing care-related journals.

GIN



JBI facilitates the ANZ Regional Group of GIN. The Group established the ANZ Guideline Network in 2020, which is comprised of researchers, academics and professionals with a common interest in improving the health of Australians and New Zealanders through the development and implementation of evidence-based guidance and guidelines. JBI manages the administration of the Network, publishes quarterly newsletters and develops webinars.



Improving the capacity of healthcare professionals to stem the spread of Covid-19 in Kenya and Cameroon

JBH was successful in receiving a grant in July 2020 from the Dreamin Foundation to deliver the JBH Evidence-based Clinical Fellowship Program in Kenya and Cameroon, focused on COVID-19 infection prevention and control in primary and community healthcare settings. Both training programs began in late October 2020 and will conclude in June 2021. The project aims to improve the capacity of healthcare practitioners working in urban, rural and remote communities in Kenya and Cameroon to implement and sustain evidence-based healthcare strategies in their daily practice to stem the spread and impact of COVID-19 and improve healthcare practice and outcomes.

Twenty-four doctors, nurses, community healthcare workers and district health officers from across the two countries will undergo a six-month, work-based training program that provides participants with the knowledge and skills to lead change initiatives to implement evidence-based practice at the point of care.

Training will be delivered by Afya Research Africa (ARA): A JBH Centre of Excellence in Kenya and Effective Basic Services Africa: A JBH Affiliated Group in Cameroon. The JBH evidence-based implementation projects in both countries will focus on infection prevention and control within both health facilities and communities.

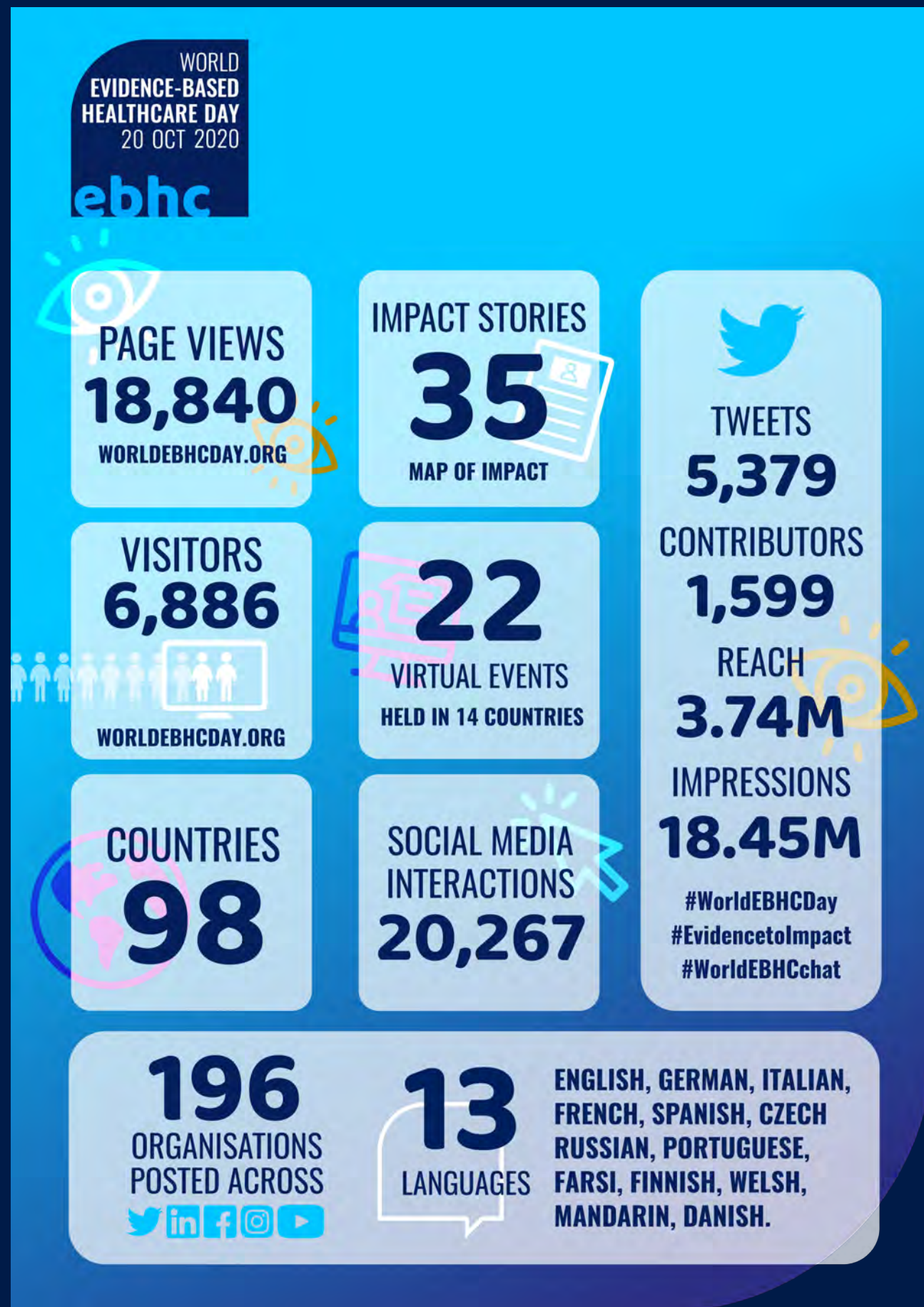


Australia Awards in Papua New Guinea Midwifery Reintegration: JBH Clinical Leadership Workshops

JBH delivered its Evidence-based Clinical Leadership Workshop as part of the Australia Awards in Papua New Guinea (PNG) Midwifery Reintegration Workshop in Port Moresby 10–11 March 2020, and by remote attendance (via Zoom) on 19 and 26 November 2020. Building on from the Clinical Leadership Workshops conducted in PNG in 2019, the workshop was a tailored version of the one-day JBH Clinical Leadership Workshop presented over two days for 46 Australia Awards Midwifery Reintegration participants.

The workshops aimed to build the capacity of participants to manage, actively lead and facilitate change in their workplace, and included conflict resolution, negotiation, communication and building workplace culture based on current best practice. The workshops were structured in an interactive way, and planned to draw out experiences and examples from the participants and enable them to reflect on their context, practice and leadership abilities. There were also role-play activities to engage with conflict scenarios to develop skills in addressing conflicts and resolving issues.





WORLD EBHC DAY



Thirty-five impact stories from 20 countries were selected for publication on the World EBHC Day website. When viewed cumulatively, these stories provide a rich insight into various approaches to EBHC; what has changed and how; and the positive, contextual and challenging experiences and outcomes from our work in EBHC. Impact stories were disseminated using a variety of digital media to engage, inform and inspire.

A world of virtual events was on offer, focusing on evidence-based healthcare and the theme, 'From Evidence to Impact'. The global community of healthcare professionals, researchers, academics, policymakers and decision-makers shared their expertise, and invited debate and vigorous discussion on a multitude of topics relating to the theme via webinars, podcasts, tweetorials, Instagram and Twitter Chats, vLogs and more.

See worldebhcd.org for further information.





EDUCATION

EVIDENCE-BASED CLINICAL FELLOWSHIP PROGRAM

JBIC and its Collaborating Entities successfully pivoted to offer the six-month evidence implementation training program by remote learning in 2020.



Despite the challenges facing educators globally over the past year, JBI and the JBI Collaboration adapted rapidly and continued training efforts. JBI offered training by remote attendance, created a new online Scoping Review Workshop offered by the University of Adelaide, and developed new digital learning opportunities and resources by creating the ‘Ask JBI’ video series and JBI LIVE webinar series.

The six-month Evidence-based Clinical Fellowship Program fulfils a critical role of assisting health professionals from around the world to become effective clinical leaders in their communities by equipping them with the knowledge and skills to lead change and implement evidence into practice.

In 2020, JBI published an editorial and a full descriptive overview and evaluation of our Evidence-based Clinical Fellowship Program:

Editorial: Lockwood C, Stannard D, Jordan Z, Porritt K. The Joanna Briggs Institute clinical fellowship program: a gateway opportunity for evidence-based quality improvement and organizational culture change. *Int J Evid Based Healthc.* 2020;18(1):1-4. doi: 10.1097/XEB.0000000000000221

Full overview paper: McArthur A, Munn Z, Lizarondo L, Porritt K, Stephenson M, Stern C, Lockwood C, Moola S, Pearson A, Jordan Z. The ripple effect of evidence implementation: a descriptive evaluation of JBI’s Evidence-based Clinical Fellowship Program. *JBIC Evid Implement.* 2020 Dec 5;19(2):142-148. doi: 10.1097/XEB.0000000000000258. PMID: 34061050.

This is the most comprehensive article to reference for the program, also published in 2020. This is a full paper and not just an editorial and includes all staff from JBI who have been involved in teaching and leading the program.



Evidence-based Clinical Fellowship Program	Registrations 2020
JBIC	12
Iran EBM Tabriz	11
PR China Fudan Shanghai	50
USA UCSF San Francisco	4
TOTAL registrations	77

COMPREHENSIVE SYSTEMATIC REVIEW TRAINING PROGRAM

Despite significant challenges associated with COVID-19, total registrations in 2020 were only slightly lower than in 2019, as the demand for virtual training increased in the second half of 2020.

The Comprehensive Systematic Review Training Program trains clinicians, policymakers and decision-makers in healthcare how to critically appraise research and report high-quality systematic reviews in order to provide the strongest possible evidence to inform decision-making or clinical guideline development in healthcare.

CS RTP REGISTRATIONS 2020

JB I	84	Czech Republic CEBHC Brno	8	Portugal EBP Coimbra	28
Australia CEP SA	13	England EBHC London	4	PR China Peking Uni BJ	96
Australia CRH NT	32	England EBHC Nottingham	30	PR China Southern Guangzhou	26
Australia EBHC NSW	10	England IHSC Plymouth	27	Scotland EBMPP Aberdeen	25
Australia Nursing Midwifery QLD	4	Ethiopia EBHC Jimma	39	South Africa Wits JHB	41
Australia Wollongong NSW	32	Finland EBHC Helsinki	29	Switzerland BEST Lausanne	9
Belgium BICEP Leuven	11	Ghana HR Kintampo	55	Taiwan EBP Taipei	25
Brazil EBHC São Paulo	58	India PCEBP Kerala	17	Thailand EBHC Chiang Mai	74
Cameroon eBase Bamenda	16	Japan EBP Chiba	10	USA NEST New Jersey	34
Canada Aligning Health NS	22	Japan EBP Osaka	7	USA Nursing Indiana	2
Canada Queens Ontario	47	Japan Otemae Hyogo	4	USA Touro Nevada	18
Canada UNB Saint John	11	Kenya ARA Nairobi	16	USA TR Texas	11
Canada Uni Victoria BC	14	Myanmar EBHC Yangon	10	USA UMMC Mississippi	26

TOTAL REGISTRATIONS 1025





JBI IS RECOGNISED GLOBALLY AS THE LEADER IN SCOPING REVIEW METHODOLOGY.

67

REGISTRATIONS FOR
SCOPING REVIEW
WORKSHOPS

45

REGISTRATIONS FOR
ONLINE SCOPING
REVIEW COURSE

SCOPING REVIEW TRAINING

In 2020, JBI released several initiatives designed to support reviewers to conduct high-quality scoping reviews following JBI methodology.

Scoping Review Workshop

JBI continued to offer the Scoping Review Workshop in 2020. The one-day workshop equips participants with the knowledge and tools required to successfully plan for and undertake a scoping review. In 2020, three workshops were offered to satisfy demand. A total of 67 participants registered for the workshops in 2020.

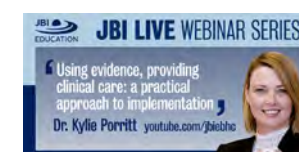
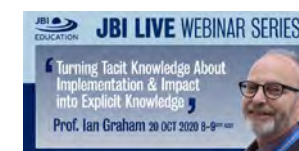
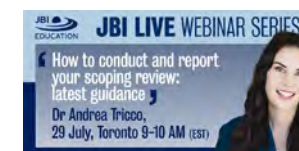
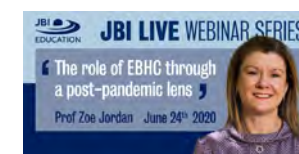
Online Scoping Review Course

In 2020, JBI introduced an online scoping review course, 'Undertaking a scoping review', to better service participants from different time zones who are unable to spend a full day at a workshop and who may prefer to learn in an online, self-paced environment. The online course drew 45 registrations from the launch date of 29 June to the end of December 2020.



DIGITAL LEARNING

To meet the increased demand for virtual EBP training and resources, JBI developed and delivered monthly webinars and specialised video content.



JBI extended its reach globally in 2020 by releasing the JBI LIVE webinar series featuring international experts who presented on topics relating to evidence-based healthcare and the Ask JBI series of short videos answering FAQs relating to evidence synthesis.

JBI LIVE

Launched in June 2020, the free JBI LIVE webinar series featured special guests presenting on their areas of expertise:

- **Prof Zoe Jordan:** 'The role of evidence-based healthcare through a post-pandemic lens'

- **Assoc Prof Andrea Tricco:** 'How to conduct and report your scoping review: latest guidance'

- **Assoc Prof Zachary Munn:** 'Criticisms of evidence-based healthcare (past and present): a response and reflection'

- **Dr Ian Graham:** 'Turning tacit knowledge into explicit knowledge: the case for casebooks'

- **Dr Kylie Porritt:** 'Using evidence, providing clinical care: a practical approach to implementation'

- **Assoc Prof Edoardo Aromataris:** 'The JBI systematic review toolkit: diverse approaches to evidence synthesis'

On average, more than 100 participants attended each webinar live.

Recordings of JBI LIVE webinars on YouTube attracted 4840 views to 31 December 2020.

Ask JBI

Ask JBI is a series of short videos that feature JBI staff members who respond to FAQs on topics relating to evidence synthesis. The series, comprised of 12 videos, was launched on 20 October 2020 to coincide with the inaugural World Evidence-Based Healthcare Day. Topics include:

- What is intention-to-treat analysis?
- Should I conduct a scoping review or systematic review?
- What are qualitative systematic reviews?

The series attracted 1423 views in the 68 days from its release to 31 December 2020 (an average of 20 views per day).



POSTGRADUATE RESEARCH DEGREES

Master of Clinical Science and Doctor of Philosophy programs

JB I offers the Master of Clinical Science (MSc) and Doctor of Philosophy (PhD) programs. Seven new students enrolled in 2020, and eight students completed their programs.

Completions

Julia Eastway

Adult patients' experiences of using electronic personal health records for self-management of chronic non-communicable disease: a qualitative systematic review

Kenneth Lo (PhD)

The Effectiveness, Economic Cost and Adoption of Robotic Rehabilitation for Mobility and Functional Ability in Adult Stroke Patients

Judith Lowe

The effectiveness of probiotics in the management of inflammatory arthritis

Michael Nganga

Management of Full-thickness Rotator Cuff Tears in the Elderly: A Systematic Review

Elsie Patterson

Provider experiences of delivering nutrition focussed lifestyle interventions for adults with metabolic syndrome and obesity: a qualitative systematic review



Vimal Sekkar

Effectiveness of endoscopic versus external surgical approaches in the treatment of orbital complications of rhinosinusitis: a systematic review and meta-analysis

Soumya

Accuracy of core needle biopsy compared to fine needle biopsy for the diagnosis of neoplasm in patients with suspected head and neck cancers: A systematic review of diagnostic test accuracy

Caitlin Steffensen

Optimisation of radiographic technique factors for direct digital radiography: a systematic review

Achievements

Shannon Barnes, JBI PhD student, won the 2020 The University of Adelaide's 'Visualise your Thesis' competition.



Research School seminars

Prior to 2020, JBI Postgraduate Research Degrees seminars were delivered face-to-face during an intensive week of Research School. In September 2020, Research School was attended by students remotely and the seminars delivered online were recorded and made freely available to the general public.

Five videos comprise the Postgraduate Research Degrees seminars series and include topics such as:

- 'Pre-planning and protocol development for systematic reviews', presented by **Prof Kay Cooper** from The Scottish Centre for Evidence-based Multi-professional Practice at Robert Gordon University
- 'Aligning systematic review questions with different methodologies and methods', presented by **Assoc Prof Edoardo Aromataris**, Director Synthesis Science at JBI.



Recordings of the seminars were viewed 972 times in the three months since their release on YouTube to 31 December 2020.

7

NEW
STUDENTS
ENROLLED

8

STUDENTS
COMPLETED
THEIR PROGRAMS

972

RESEARCH SCHOOL
SEMINARS VIEWED
ON YOUTUBE

JBI METHODOLOGICAL PROGRAM

The JBI Scientific Committee is responsible for the development and oversight of JBI’s methodologies and materials that guide the conduct of evidence synthesis, transfer and implementation.

JBI Scientific Committee

The JBI Scientific Committee includes international representatives from each of the JBI Collaboration regions (see pages 24-30), as well as members from JBI in Adelaide and representatives from each of the JBI methodology groups.

Methodological groups of the JBI Scientific Committee provide ongoing guidance to the JBI Scientific Committee on the development, update, testing and review of evidence synthesis, evidence transfer and evidence implementation methodologies to be adopted by JBI and its Collaborating Entities globally. It also advises the editors-in-chief of the journals, *JBI Evidence Synthesis* (see pages 18-19) and *JBI Evidence Implementation* (see pages 20-21).

The work of these groups also directly informs the development of, and innovations in, JBI software, including JBI SUMARI and JBI PACES (see pages 22-23), as well as the JBI education programs (see pages 38-45).

The ongoing work of the methodological groups is available in the *JBI Manual for Evidence Synthesis* and *JBI Manual for Evidence Implementation*.

2020 Highlights

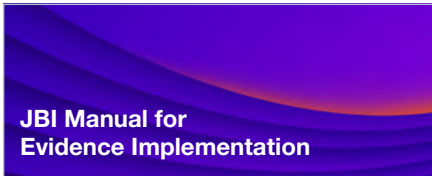
JBI Manual for Evidence Synthesis

The *JBI Manual for Evidence Synthesis* (formerly the *JBI Reviewers Manual*) provides authors with a comprehensive guide to conducting JBI systematic reviews.



In 2020, the *JBI Manual for Evidence Synthesis* underwent a rebrand, revision and update. With the change in name, the online manual was assigned a new ISSN and each chapter was given a unique digital object identifier (DOI) via CrossRef to ensure accurate and complete citation tracking for all authors moving forward.

In 2020, groups from China and Switzerland signed agreements with JBI to translate chapters of the *JBI Manual for Evidence Synthesis* into Chinese and German.



The JBI Manual for Evidence Implementation

The *JBI Manual for Evidence Implementation* provides an overview of JBI-endorsed approaches to getting evidence into practice.

In 2020, the *JBI Manual for Evidence Implementation* underwent a rebrand, revision and update.

Scoping Review Network

The Scoping Review Network was launched on 29 July 2020 during the JBI LIVE webinar, ‘How to conduct and report scoping review’, by Assoc Prof Andrea Tricco, a member of the JBI Scoping Review Methodology Group. The purpose of the Scoping Review Network is to provide resources to improve the quality of scoping reviews, and to provide a platform for reviewers to connect with scoping review experts.

The Network grew to 300 members by the end of December 2020, and the Network’s webpage had received more than 10,000 visits.



JBI Methodology Groups

The JBI Methodology Groups, are made up of experts from across JBI and the JBI Collaboration who examine its methodologies for the conduct of systematic reviews of different types of evidence.



Umbrella Reviews
Assoc Prof.
Edoardo Aromataris



Text & Opinion
Alexa McArthur



Effectiveness
Dr Timothy Barker



Implementation
Dr Kylie Porritt



Qualitative
Assoc Prof.
Craig Lockwood



Information Science
Amanda Ross-White



Mixed Methods
Prof. Heather Loveday



Pyschometrics
Dr Matthew Stephenson



Effectiveness & Prevalence/
Incidence, Risk & Prognosis
Assoc Prof. Zachary Munn



Scoping Reviews
Dr Andrea Tricco

JBI Predatory Publishing Practices Group

JBI’s Predatory Publishing Practices Group was established in 2020 to review emerging literature relating to the inclusion of studies from predatory journals in systematic reviews, to develop guidance for systematic reviewers and to conduct research into predatory publishing practices.

JBI appraisal tools and risk of bias

Members of the JBI methodology group for reviews of effectiveness launched a project to review all of the JBI critical appraisal tools for analytical quantitative studies and refocus their use towards assessment of risk of bias and internal only, rather than other study characteristics such as reporting quality.

Publications

Stern C, Lizarondo L, Carrier J, Godfrey C, Rieger K, Salmond S, Apóstolo J, Kirkpatrick P, Loveday H. Methodological guidance for the conduct of mixed methods systematic reviews. *JBI Evidence Synthesis*. 2020;18(10):2108-18. doi: 10.11124/JBISRR-D-19-00169

Peters MDJ, Marnie C, Tricco AC, Pollock D, Munn Z, Alexander L, McInerney P, Godfrey CM, Khalil Hanan. Updated methodological guidance for the conduct of scoping reviews. *JBI Evidence Synthesis*. 2020;18(10):2119-26. doi: 10.11124/JBIES-20-00167

Munn Z, Barker TH, Moola S, Tufanaru C, Stern C, McArthur Alexa, Stephenson M, Aromataris E. Methodological quality of case series studies: an introduction to the JBI critical appraisal tool. *JBI Evidence Synthesis*. 2020;18(10):2127-33. doi: 10.11124/JBISRR-D-19-00099

Khalil H, Peters MDH, Tricco AC, Pollock D, Alexander L, McInerney P, Godfrey CM, Munn Z. Conducting high quality scoping reviews-challenges and solutions. *Journal of Clinical Epidemiology*. 2021;130:156-60. doi: 10.1016/j.jclinepi.2020.10.009.

CONSULTANCY

In 2020, JBI conducted research consultancy projects, both commissioned and collaborative.

Completed projects

Title: Interventions for children on the autism spectrum: a synthesis of research evidence

Dates: May–August 2020

Commissioning organisation: Autism CRC

Investigator: Cindy Stern

Methodological guidance was provided to support the conduct of an umbrella review following the JBI approach. The review was published in November 2020.



5 NEW RESEARCH PROJECTS
3 CONTINUING PROJECTS
1 COMPLETED PROJECT

Continuing projects

Commissioning organisation	Project title	Investigator
ANROWS (Australia's National Research Organisation for Women's Safety)	What works to reduce and respond to violence against women: evidence synthesis, methods and communication project	Cindy Stern is a member of the Advisory Board
South African Medical Research Council and Cochrane South Africa	Contextualised strategies to increase childhood and adolescent vaccination coverage in South Africa	Janine Dizon is a team member
G-I-N Multimorbid Guidelines Group	Comparative study of guideline methodologies on multimorbidity	Janine Dizon is a team member

New projects

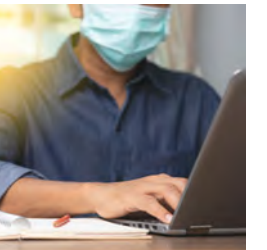
NHMRC Investigator Grant

A/Prof Zachary Munn, Director Transfer Science at JBI was awarded a National Health and Medical Research Council Investigator Grant of \$645,205 over five years to investigate and improve the quality and science of the synthesis of medical research through the development of an evidence synthesis taxonomy. This will be a comprehensive resource for health services researchers, policymakers, academics, clinicians and consumers to inform policy and practice.



CIHR E-Covid RecMap

The COVID-19 living catalogue of guidelines collects best-available recommendations on COVID-19 for clinical, public health and health policy. It allows decision-makers to identify relevant recommendations for their question of interest. One of its primary goals is to allow contextualised local, provincial, regional and jurisdictional decision-making. Our approach is to review all globally published recommendations on COVID-19 and include all recommendations by key organisations. This eCOVID-19 living map of recommendations is funded by CIHR (FRN VR4- 172741).



The Minderoo Foundation

There is increasing evidence on the possible risks of detrimental health outcomes due to exposure to plastics and plastic chemicals; however, there is no published document that comprehensively summarises the evidence regarding the impact of plastics and plastic chemical exposure on human health. The Minderoo Foundation commissioned JBI to conduct an overview of reviews to investigate the impact of all types of plastics on human health.



St Vincent's

The JBI Adelaide GRADE Centre are supporting a guideline development group to develop guidelines regarding Extracorporeal Membrane Oxygenation.



Flinders University

Recommendations for older adults' physical activity and sedentary behaviour during hospitalisation for an acute medical illness



Society of Obstetric Medicine of Australia and New Zealand

The JBI Adelaide GRADE Centre are supporting a guideline development group to develop guidelines regarding hypertensive disorders of pregnancy. This is in association with the Society of Obstetric Medicine of Australia and New Zealand.





ORAL PRESENTATIONS BY JBI STAFF

Aromataris E	The JBI systematic review toolkit: diverse approaches to evidence synthesis	JBI LIVE webinar
Aromataris E	Aligning systematic review questions with different methodologies and methods	Postgraduate Research Degrees Research School Seminar, University of Adelaide
Aromataris E, Stern C	Living systematic reviews for JBI	64th JBI Collaboration Meeting
Jordan Z	Looking up before looking forward: the role of evidence-based healthcare through a post pandemic lens	JBI LIVE Webinar
Jordan Z	The JBI Collaboration: making evidence meaningful	Finland 10th Anniversary Celebration
Jordan Z, Pilla B	JBI new horizons: bigger, better, brighter	WKH Sales meeting, Scottsdale, Arizona
Lizarondo L	JBI: promoting and supporting the use of the best available evidence to inform clinical decisions	NSW Health/Clinical Information Access Portal (CIAP) Seminar
Lockwood C	Qualitative synthesis: bringing experience to action	JBI LIVE Webinar
Lockwood C	Quality and safety in the era of a Royal Commission and aged care standards	Wolters Kluwer Health webinar
McArthur A	Evidence-based practice culture and capacity building	University of Southern Queensland seminar School of Nursing and Midwifery
McArthur A	Implementing evidence into clinical practice	PNG Australia Awards webinar
McArthur A, Lizarondo L	Implementation of evidence in health: advances, challenges and perspectives	Evidence-based Practice Workshop for NSW Health/CIAP
Munn Z	COVID-19 pandemic: navigating evidence and guidance in a crisis	GIN webinar
Munn Z	Criticisms of evidence-based healthcare (past and present): a response and reflection	JBI LIVE webinar
Munn Z	The importance of registering guidelines	GIN Conference
Munn Z	Predatory publishing and systematic reviews	64th JBI Collaboration Meeting
Munn Z	Guidelines during COVID-19 and guideline registries	COVID Evidence Network to Support Decision Making Meeting
Pilla B	How JBI uses modified case stories to articulate policy and practice impacts	JBI LIVE webinar
Porritt K	Past, present and future of evidence-based health care	EAFONS 2020 23rd East Asian Forum of Nursing Scholars, Chiang Mai, Thailand
Porritt K	Using evidence, providing clinical care: a practical approach to implementation	JBI LIVE webinar

PUBLICATIONS BY JBI STAFF

Editorials

Aromataris E. Furthering the science of evidence synthesis with a mix of methods. JBI Evid Synth. 2020;18(10):2106-7. doi:10.11124/jbies-20-00369

Aromataris E, Lockwood C. Decisions, decisions: working towards the best available evidence. JBI Evid Synth. 2020;18(8):1609-10. doi:10.11124/jbies-20-00279

Jordan Z. The chameleon effect: adapting, advancing and aligning. Int J Evid Based Healthc. 2020;18(2):157-8. doi:10.1097/XEB.0000000000000240

Lockwood, CS; Stannard, D; Jordan, Z; Porritt, K. The Joanna Briggs Institute clinical fellowship program: a gateway opportunity for evidence-based quality improvement and organizational culture change, International Journal of Evidence-Based Healthcare: March 2020 - Volume 18 - Issue 1 - p 1-4 doi: 10.1097/XEB.0000000000000221

Lockwood, CS; Khalil, H JBI Evidence Implementation as the myelin sheath to the action potential of implementation science, JBI Evidence Implementation: September 2020 - Volume 18 - Issue 3 - p 276-277 doi: 10.1097/XEB.0000000000000249

Lockwood CS, Mabre C. Hospital discharge planning: evidence, implementation and patient-centered care. JBI Evid Synth. 2020;18(2):272-4. doi:10.11124/JBIES-20-00023

Lockwood C, Sfetcu R. Ethics in quality improvement: reimagining the clinician role. Nurs Health Sci. 2020;22(3):483-5. doi:10.1111/nhs.12648

Lockwood CS, Tricco A. Preparing scoping reviews for publication using methodological guides and reporting standards. Nurs Health Sci. 2020;22(1):1-4. doi:10.1111/nhs.12673

Munn Z, Twaddle S, Service D, Harrow E, Okwen PM, Schünemann H, Vandvik PO. Developing guidelines before, during, and after the COVID-19 pandemic. Ann Intern Med. 2020;173(12):1012-14. doi:10.7326/M20-4907

Pilla B, Scott AM, Jordan Z. If not now, when? Time to focus on “evidence to impact”. JBI Evid Synth. 2020;18(10):2104-5. doi:10.11124/JBIES-20-00373

Porritt K, Lockwood C. Does facing the challenges of a global pandemic require more than evidence? JBI Evid Synth. 2020;18(5):857-8. doi:10.11124/jbies-20-00133

Stern C, Kleijnen J. Language bias in systematic reviews: you only get out what you put in. JBI Evid Synth. 2020;18(9):1818-19. doi:10.11124/JBIES-20-00361

Commentary

Aromataris E, Stern C. Supporting a definition of predatory publishing. BMC Med. 2020;18(1):125. doi:10.1186/s12916-020-01599-6

Jordan Z, Karunanathan S. The hardest thing about learning is unlearning: why systematic review replication should be reconsidered. JBI Evid Synth. 2020;18(11):2194-5. doi:10.11124/JBIES-20-00452

Tricco A, Garritty C, Boulos L, Lockwood C, Wilson M, McGowan J, McCaul M, Hutton B, Clement F, Mittmann N, Devane D, Langlois E, Abou-Setta A, Houghton C, Glenton C, Kelly S, Welch V, LeBlanc A, Wells G, Pham B, Lewin S, Straus S. Rapid review methods more challenging during COVID-19: commentary with a focus on 8 knowledge synthesis steps. J Clin Epidemiol. 2020;126:177-83. doi:10.1016/j.jclinepi.2020.06.029

Migliavaca CB, Stein C, Colpani V, Munn Z, Falavigna M. Quality assessment of prevalence studies: a systematic review. J Clin Epidemiol. 2020;127(Nov 2020):59-68. doi:10.1016/j.jclinepi.2020.06.039

Journal articles: systematic reviews, research papers and implementation reports

Abrahams JM, Callary SA, Munn Z, Jang SW, Huang Q, Howie DW, Solomon LB. Acetabular component migration measured using radiostereometric analysis following revision total hip arthroplasty: a scoping review. JBJS Rev. 2020;8(4):e0170. doi:10.2106/jbjs.rvw.19.00170

Alshowaeir D, Almasoud N, Aldossari S, Alsirhy EY, Osman E, Turjoman A, Amer Y, Munn Z, McArthur A. Primary open angle glaucoma management in a tertiary eye care center in Saudi Arabia: a best practice implementation pilot project. JBI Evid Implement. 2020;19(2):208-16. doi:10.1097/xeb.0000000000000257

Ansari F, Pashazadeh F, Nourollahi E, Hajebrahim S, Munn Z, Pourjafar H. A systematic review and meta-analysis: the effectiveness of probiotics for viral gastroenteritis. Curr Pharm Biotechnol. 2020;21(11):1042-51. doi:10.2174/1389201021666200416123931

Barker T, Howarth G, Whittaker A. Subordination in female rats impedes learning as determined by a judgment bias training protocol. J Vet Behav. 2020;38:56-60. doi:10.1016/j.jveb.2020.05.009

Barnes S, Jordan Z, Broom M. Health professionals’ experiences of grief associated with the death of pediatric patients: a systematic review. JBI Evid Synth. 2020;18(3):459-515. doi:10.11124/jbisir-d-19-00156

Borges K, Campos C, Perrone AC, Silva Vieira C, Coelho D, Hallack-Neto A, Lockwood CS, Püschel V. Nursing documentation for chemotherapy in a university hospital’s bone marrow transplant unit: a best practice implementation project. Int J Evid Based Healthc. 2020;18(1):75-85. doi:10.1097/XEB.0000000000000216

Borges Migliavaca C, Stein C, Colpani V, Barker TH, Munn Z, Falavigna M. How are systematic reviews of prevalence conducted? A methodological study. BMC Med Res Methodol. 2020;20(1):96. doi:10.1186/s12874-020-00975-3

Brito APA, Shimoda GT, Aragaki IMM, Sichieri K, Cirico MOV, de Freitas P, McArthur A. Nonpharmacological analgesic interventions among newborn infants in the University Hospital of the University of Sao Paulo: a best practice implementation project. JBI Evid Implement. 2020;18(4):431-44. doi:10.1097/xeb.0000000000000246

Cai X, McArthur A. Discharge following sedation for endoscopic procedures: a best practice implementation project. JBI Evid Synth. 2020;18(2):348-56. doi:10.11124/jbisir-d-19-00053

Colebatch E, Lockwood C. Enhanced perioperative nutritional care for patients undergoing elective colorectal surgery at Calvary North Adelaide Hospital: a best practice implementation project. JBI Evid Synth. 2020;18(1):224-42. doi:10.11124/jbisir-2017-003994

Foroutan F, Guyatt G, Zuk V, Vandvik PO, Alba AC, Mustafa R, Vernooij R, Arevalo-Rodriguez I, Munn Z, Roshanov P, Riley R, Schandelmaier S, Kuijpers T, Siemieniuk R, Canelo-Aybar C, Schunemann H, Iorio A. GRADE Guidelines 28: use of GRADE for the assessment of evidence about prognostic factors: rating certainty in identification of groups of patients with different absolute risks. J Clin Epidemiol. 2020;121:62-70. doi:10.1016/j.jclinepi.2019.12.023

Gyi AA. Patient-mediated interventions to improve professional practice: a Cochrane review summary. Int J Nurs Stud. 2020;106:103320. doi:10.1016/j.ijnurstu.2019.03.010

Harfield S, Pearson O, Morey K, Kite E, Canuto K, Glover K, Gomersall J, Carter D, Davy C, Aromataris E, Braunack-Mayer A. Assessing the quality of health research from an Indigenous perspective: the Aboriginal and Torres Strait Islander quality appraisal tool. BMC Med Res Methodol. 2020;20(1):79. doi:10.1186/s12874-020-00959-3

Huang X, Zhang J, Zhou F, Yang Y, Lizarondo L, McArthur A. Promotion of early breast milk expression among mothers of preterm infants in the neonatal ICU in an obstetrics and gynaecology hospital: a best practice implementation project. JBI Evid Implement. 2020;18(3):278-87. doi:10.1097/XEB.0000000000000223

Karunananthan S, Maxwell LJ, Welch V, Petkovic J, Pardo Pardo J, Rader T, Avey MT, Baptiste-Ngobi J, Batista R, Curran JA, Tanjong Ghogomu E, Graham ID, Grimshaw JM, Ioannidis JPA, Jordan Z, Jull J, Lyddiatt A, Moher D, Petticrew M, Pottie K, Rada G, Shamseer L, Shea B, Siontis K, Tschirhart N, Vachon B, Wells GA, White H, Tugwell P. When and how to replicate systematic reviews. *Cochrane Database Syst Rev*. 2020;2020(2). doi:10.1002/14651858.MR000052

Khalil H, Peters MDH, Tricco AC, Pollock D, Alexander L, McInerney P, Godfrey CM, Munn Z. Conducting high quality scoping reviews-challenges and solutions. *Journal of Clinical Epidemiology*. 2021;130:156-60. doi: 10.1016/j.jclinepi.2020.10.009

Klotz T, Munn Z, Aromataris EC, Greenwood JE. Imiquimod to prevent keloid recurrence post excision: a systematic review and meta-analysis. *Wound Repair Regen*. 2020;28(1):145-56. doi:10.1111/wrr.12766

Kourbelis CM, Marin TS, Foote J, Brown A, Daniel M, Coffee NT, Newman P, Beks H, Ganesan A, Versace VL, Nicholls S, Clark RA. Effectiveness of discharge education strategies versus usual care on clinical outcomes in acute coronary syndrome patients: a systematic review. *JBISIRIR-D-19-00042*

Lizarondo L, McArthur A, Lockwood C, Munn Z. Facilitation of evidence implementation within a clinical fellowship program: a mixed methods study. *JBISIRIR-D-19-00042*

Lo K, Stephenson M, Lockwood C. Adoption of robotic stroke rehabilitation into clinical settings: a qualitative descriptive analysis. *Int J Evid Based Healthc*. 2020;18(4):376-90. doi:10.1097/XEB.0000000000000231

Lo K, Stephenson M, Lockwood C. Extending the hierarchical decision matrix to incorporate a dominance ranking score for economic systematic reviews. *MethodsX*. 2020;7:101047. doi:10.1016/j.mex.2020.101047

Lockwood C, Khalil H. JBI evidence implementation as the myelin sheath to the action potential of implementation science. *JBISIRIR-D-19-00042*

Lockwood CS, Stannard D, Jordan Z, Porritt K. The Joanna Briggs Institute clinical fellowship program: a gateway opportunity for evidence-based quality improvement and organizational culture change. *Int J Evid Based Healthc*. 2020;18(1):1-4. doi:10.1097/XEB.0000000000000221

Lowe JR, Briggs AM, Whittle S, Stephenson MD. A systematic review of the effects of probiotic administration in inflammatory arthritis. *Complement Ther Clin Pract*. 2020;40. doi:10.1016/j.ctcp.2020.101207

Marin TS, Walsh S, May N, Jones M, Gray R, Muir-Cochrane E, Clark RA. Screening for depression and anxiety among patients with acute coronary syndrome in acute care settings: a scoping review. *JBISIRIR-D-19-00316*

Martin KB, Bednarz JM, Aromataris EC. Interventions to control children's screen use and their effect on sleep: a systematic review and meta-analysis. *J Sleep Res*. 2020;30(3):e13130. doi:10.1111/jsr.13130

McArthur A, Munn Z, Lizarondo L, Porritt K, Stephenson M, Stern C, Lockwood C, Moola S, Pearson A, Jordan Z. The ripple effect of evidence implementation: a descriptive evaluation of JBI's Evidence-based Clinical Fellowship Program. *JBISIRIR-D-19-00316*

McCabe D, Bednarz J, Lockwood C, Barker TH. Specific nutrient intake via diet and/or supplementation in relation to female stress: a cross-sectional study. *Women Health Rep*. 2020;1(1):241-51. doi:10.1089/whr.2020.0035

McCabe D, Lockwood C. Women's experience of stress and related use of diet and/or dietary supplements. *Nurs Health Sci*. 2020;22(4):1121-30. doi:10.1111/nhs.12780

Munn Z. Why isn't there an evidence-based radiography? Reflections and a call to action. *Radiography (Lond)*. 2020;26(Suppl. 2):S14-S16. doi:10.1016/j.radi.2020.05.005

Munn Z, Barker TH, Moola S, Tufanaru C, Stern C, McArthur A, Stephenson M, Aromataris E. Methodological quality of case series studies: an introduction to the JBI critical appraisal tool. *JBISIRIR-D-19-00099*

Munn Z, Brandt L, Kuijpers T, Whittington C, Wiles L, Karge T. Are systematic review and guideline development tools useful? A Guidelines International Network survey of user preferences. *JBISIRIR-D-19-00099*

Munn Z, McArthur A, Mander GTW, Steffensen CJ, Jordan Z. Evidence-based healthcare, knowledge translation, implementation science and radiography: what does it all mean? *Radiography (Lond)*. 2020;26(Suppl 2):S8-S13. doi:10.1016/j.radi.2020.05.008

Munn Z, McArthur A, Mander GTW, Steffensen CJ, Jordan Z. The only constant in radiography is change: a discussion and primer on change in medical imaging to achieve evidence-based practice. *Radiography (Lond)*. 2020;26(2):s3-s7. doi:10.1016/j.radi.2020.07.001

Munn Z, Tufanaru C, Lockwood C, Stern C, McAneney H, Barker TH. Rinse-free hand wash for reducing absenteeism among preschool and school children. *Cochrane Database Syst Rev*. 2020;4(4):CD012566. doi:10.1002/14651858.cd012566.pub2

Pap R, McKeown R, Lockwood C, Stephenson M, Simpson P. Pelvic circumferential compression devices for prehospital management of suspected pelvic fractures: a rapid review and evidence summary for quality indicator evaluation. *Scand J Trauma Resusc Emerg Med*. 2020;28(1):1-13. doi:10.1186/s13049-020-00762-5

Peters MDJ, Marnie C, Tricco AC, Pollock D, Munn Z, Alexander L, McInerney P, Godfrey CM, Khalil H. Updated methodological guidance for the conduct of scoping reviews. *JBISIRIR-D-19-00167*

Pham C, Lizarondo L, Karnon J, Aromataris E, Munn Z, Gibb C, Fitridge R, Maddern G. Strategies for implementing shared decision making in elective surgery by health care practitioners: a systematic review. *J Eval Clin Pract*. 2020;26(2):582-601. doi:10.1111/jep.13282

Pollock D, Murphy M, O'Leary J, Warland J. Pregnancy after loss during the COVID19 pandemic. *Women Birth*. 2020;33(6):540-3. doi:10.1016/j.wombi.2020.07.011

Porritt K. Epidural analgesia for adult undergoing cardiac surgery with or without cardiopulmonary bypass. *Clin Nurse Spec*. 2020;34(4):150-1. doi:10.1097/NUR.0000000000000527

Porritt K. Exercise-based cardiac rehabilitation for adults with implantable cardioverter defibrillators. *Br J Community Nurs*. 2020;25(9):460-1. doi:10.12968/bjcn.2020.25.9.460

Schneider J, Ye D, Hill AM, Whitehorn AS. Continued post-retraction citation of a fraudulent clinical trial report, 11 years after it was retracted for falsifying data. *Scientometrics*. 2020;125(3):2877-913. doi:10.1007/s11192-020-03631-1

Stephenson MD, Bradshaw W. Kidney transplantation: interventions to improve medication adherence. *Ren Soc Australas J*. 2020;16(1):8-12. doi:https://search.informit.org/doi/10.3316/informit.015931209052213

Stern C, Lizarondo L, Carrier J, Godfrey C, Rieger K, Salmond S, Apostolo J, Kirkpatrick P, Loveday H. Methodological guidance for the conduct of mixed methods systematic reviews. *JBISIRIR-D-19-00169*

Stone JC, Glass K, Munn Z, Tugwell P, Doi SAR. Comparison of bias adjustment methods in meta-analysis suggests that quality effects modeling may have less limitations than other approaches. *J Clin Epidemiol*. 2020;117:36-45. doi:10.1016/j.jclinepi.2019.09.010

Theodoulou A, Krishnan J, Aromataris E. Risk of complications in patients who are obese following upper limb arthroplasty: A systematic review and meta-analysis. *Obes Res Clin Pract*. 2020;14(1)9-26. doi:10.1016/j.orcp.2020.01.001

Tugwell P, Welch VA, Karunananthan S, Maxwell LJ, Akl EA, Avey MT, Bhutta ZA, Brouwers MC, Clark JP, Cook S, Cuervo LG, Curran JA, Ghogomu ET, Graham IG, Grimshaw JM, Hutton B, Ioannidis JPA, Jordan Z, Jull JE, Kristjansson E, Langlois EV, Little J, Lyddiatt A, Martin JE, Marušić A, Mbuagbaw L, Moher D, Morton RL, Nasser M, Page MJ, Pardo JP, Petkovic J, Petticrew M, Pigott T, Pottie K, Rada G, Rader T, Riddle AY, Rothstein H, Schüneman HJ, Shamseer L, Shea BJ, Simeon R, Siontis KC, Smith M, Soares-Weiser K, Thavorn K, Tovey D, Vachon B, Valentine J, Villemaire R, Walker P, Weeks L, Wells G, Wilson DB, White H. When to replicate systematic reviews of interventions: Consensus checklist. *BMJ*. 2020;370:m2864. doi:10.1136/bmj.m2864

Wang L, McArthur A, Lu Z, Yang Y, Lu H, Chen F, Xue M. Prechemotherapy nursing assessment among adult cancer patients in a university cancer center in Shanghai, China: a best practice implementation project. *Int J Evid Based Healthc*. 2020;18(3):308-17. doi:10.1097/xeb.0000000000000233

Whittaker A, Barker T. A consideration of the role of biology and test design as confounding factors in judgement bias tests. *Appl Anim Behav Sci*. 2020;232:105126-1-105126-9. doi:10.1016/j.applanim.2020.105126

Whittaker A, Barker T. Optimising 'positive' findings from judgement bias tests: a consideration of inherent confounding factors associated with test design and biology. *Preprints*. 2020. Online(27 May 2020). doi:10.20944/preprints202005.0452.v1

Whittaker A, Barker T. The impact of common recovery blood sampling methods, in mice (*Mus musculus*), on wellbeing and sample quality: a systematic review. *Animals*. 2020;10(6):989. doi:10.3390/ani10060989

Wu Y, Li W, Stephenson M, Cong W, Zhou C. Pre-treatment assessment for patients with breast cancer undergoing chemotherapy: a best practice implementation project. *JBISIRIR-D-19-00163*

Zhai J, Hu X, Wen Z, Chen L, Ye R, Zheng X, Xiong A, Barker TH, McArthur A. Promoting healthy lifestyle considerations during pregnancy in Midwifery clinics in China: a best practice implementation project. *International Journal of Evidence-Based Healthcare*. 2020. Publish Ahead of Print. doi:10.1097/xeb.0000000000000247

Journal articles: systematic review protocols

Barnes S, Broom M, Jordan Z. The incidence and prevalence of acute stress disorder and post-traumatic stress disorder in parents of children hospitalized in intensive care units: a systematic review protocol. *JBISIRIR-D-19-00080*

Borg C, Porritt K, Hotham E. Patient, parent/carer, and health care professional experience of medication adherence in children and adolescents with asthma: a qualitative systematic review protocol. *JBISIRIR-D-19-00026*

Burgess D, Lizarondo L, Gardner S. Effectiveness of air polishing as a method of oral prophylaxis in the orthodontic setting: a systematic review protocol. *JBISIRIR-D-19-00287*

Cirico MOV, Shimoda GT, Silva IA, de Sousa MVP, de Castro R, McArthur A. The effectiveness of photobiomodulation therapy on nipple pain or nipple trauma treatment in lactating women: a systematic review protocol. *JBISIRIR-D-19-00371*

Collins J, Lizarondo L, Porritt K. Adult patient and/or carer experiences of planning for hospital discharge after major trauma: a qualitative systematic review protocol. *JBISIRIR-D-19-00218*

Dangen J, Porritt K, Abbas S. Effect of preoperative nutritional supplementation on postoperative outcomes for patients undergoing pancreaticoduodenectomy for cancer: a systematic review protocol. *JBISIRIR-D-19-00227*

Karunananthan S, Maxwell LJ, Welch V, Petkovic J, Pardo JP, Rader T, Avey MT, Baptiste-Ngobi J, Batista R, Curran JA, Ghogomu ET, Graham ID, Grimshaw JM, Ioannidis JPA, Jordan Z, Jull J, Lyddiatt A, Moher D, Petticrew M, Pottie K, Rada G, Shamseer L, Shea B, Siontis KC, Tschirhart N, Vachon B, Wells GA, White H, Tugwell P. Protocol: when and how to replicate systematic reviews. *Campbell Syst Rev*. 2020;16(2). doi:10.1002/cl2.1087

Konno R, Kanzaki H, Stern C, Lizarondo L. Assisted bathing of older people with dementia: a mixed methods systematic review protocol. *JBISIRIR-D-19-00160*

Lizarondo L, Stern C, Carrier J, Godfrey C, Rieger K, Salmond S, Apostolo J, Kirkpatrick P, Loveday H. Barriers and enablers to implementation of pressure injury prevention in hospitalized adults: a mixed methods systematic review protocol. *JBISIRIR-D-19-00265*

Lizarondo L, Stern C, Puljak L, Zhu Z, Munn Z. Evidence synthesis methodology for questions relating to barriers and/or enablers in health care: a scoping review protocol. *JBISIRIR-D-19-00177*

Navacchi M, Lockwood C. Perceptions and experiences of nurses involved in quality-improvement processes in acute healthcare facilities: a qualitative systematic review protocol. *JBISIRIR-D-19-00282*

Min M, Hancock DG, Aromataris E, Crotti T, Boros C. Experiences of living with juvenile idiopathic arthritis: a qualitative systematic review protocol. *JBISIRIR-D-19-00301*

Musker M, McArthur A, Munn Z, Wong M-L. Circulating leptin levels in patients with myalgic encephalomyelitis, chronic fatigue syndrome or fibromyalgia: a systematic review protocol. *JBISIRIR-D-19-00125*

Pap R, Lockwood C, Stephenson M, Simpson P. Development and testing of Australian prehospital care quality indicators: study protocol. *BMJ Open*. 2020;10(7):e038310. doi:10.1136/bmjopen-2020-038310

Patterson E, Munn Z, Jennings C. Experiences of providers in delivering nutrition-focused lifestyle interventions for adults with obesity or metabolic syndrome in primary healthcare settings: a qualitative systematic review protocol. *JBISIRIR-D-19-00182*

Pollock D, Cooper M, McArthur A, Barker T, Munn Z. Women's experiences of their interactions with health care providers during the postnatal period in Australia: a qualitative systematic review protocol. *JBISIRIR-D-19-00182*

Ritchie B, Porritt K, Marin T, Williams N. Diagnostic test accuracy of serum measurement of procalcitonin and C-reactive protein for bone and joint infection in children and adolescents: a systematic review protocol. *JBISIRIR-D-19-00139*

Soumya, Whitehorn A, Ooi EH, Lockwood C. Accuracy of core needle biopsy compared to fine needle biopsy for the diagnosis of neoplasm in patients with suspected head and neck cancers: a systematic review protocol of diagnostic test accuracy. *JBISIRIR-D-19-00225*

Stern C, Lizarondo L, Carrier J, Godfrey C, Rieger K, Salmond S, Apostolo J, Kirkpatrick P, Loveday H. Impact of canine-assisted interventions on the health and well-being of older people residing in long-term care: a mixed methods systematic review protocol. *JBISIRIR-D-19-00224*

Walters SJ, Stern C, Stephenson M. The measurement of fatigue in clinicians within hospital settings: a systematic review protocol of measurement properties of instruments. *JBISIRIR-D-19-00028*

Whitehorn A, Porritt K, Lockwood C, Xing W, Zhu Z, Hu Y. Methodological components and quality of evidence summaries: a scoping review protocol. *JBISIRIR-D-19-00258*

Yapa S, Lockwood C, Kuster M. Effectiveness of administering tranexamic acid to high-risk hip and knee arthroplasty patients: a systematic review protocol. *JBISIRIR-D-19-00145*

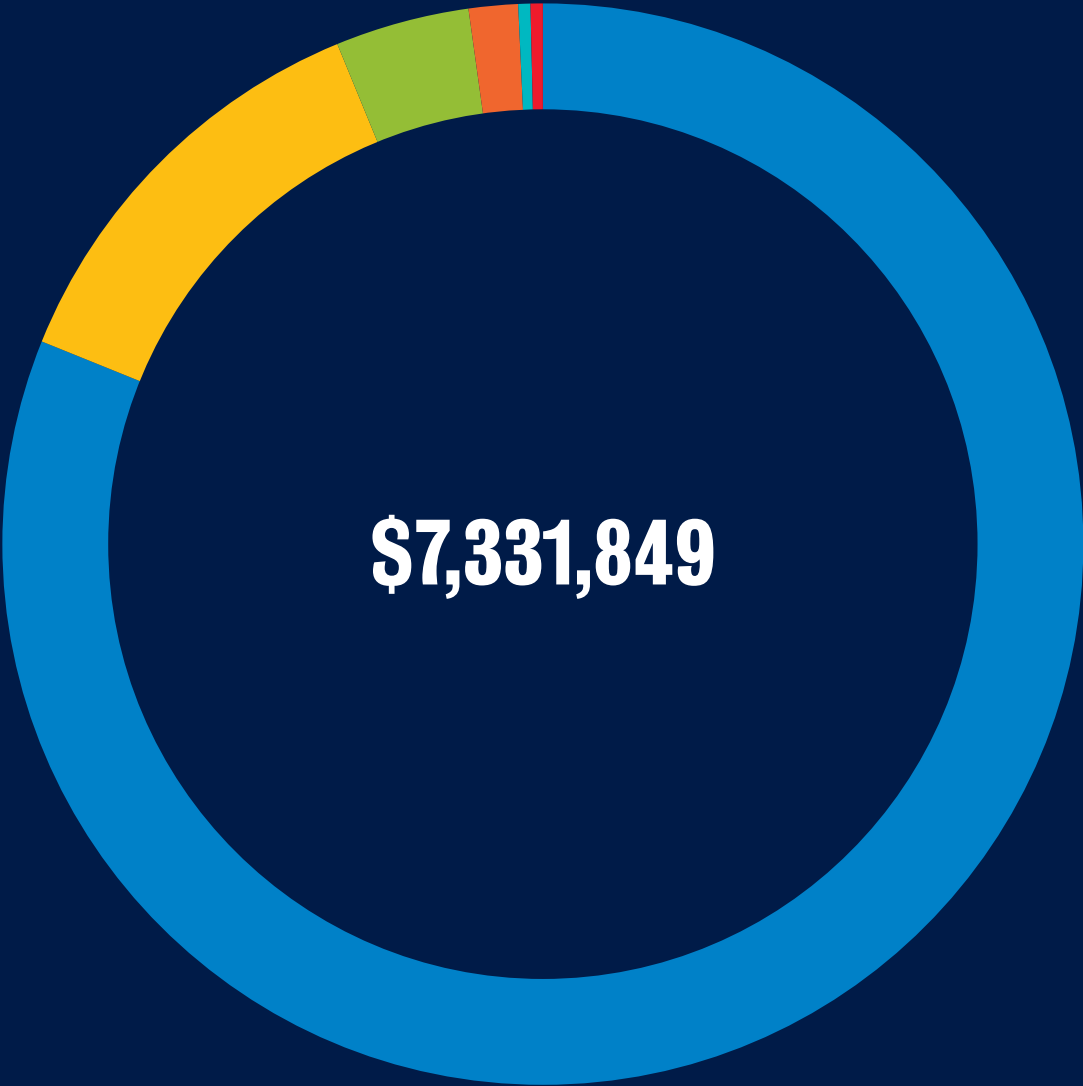
Zhu Z, Xing W, Lizarondo L, Peng J, Hu Y, So WK. Psychometric properties of self-reported financial toxicity measures in cancer survivors: a systematic review protocol using COSMIN methodology. *BMJ Open*. 2020;10(5):e036365-. doi:10.1136/bmjopen-2019-036365

Internet articles

Lockwood CS, Crawford L. Goodbye, brain scrapers. COVID-19 tests now use gentler nose swabs. *The Conversation*. 2020.

Lockwood CS, Jordan Z. 13 insider tips on how to wear a mask without your glasses fogging up, getting short of breath or your ears hurting. *The Conversation*. 2020.

JBI FINANCIALS



WK Research Translation Agreement \$5,947,214

JBI Short Courses \$293,990

Philanthropy \$26,538

Research Block Grants \$929,384

Consulting \$107,879

Miscellaneous \$26,844

FOR FURTHER ENQUIRIES

The University of Adelaide SA 5005 Australia

ENQUIRIES jbi@adelaide.edu.au

TELEPHONE +61 8 8313 4880



jbi.global



facebook.com/JBIEBHC



twitter.com/JBIEBHC



JBIE BUIZZ Newsletter



linkedin.com/company/JBIEBHC



youtube.com/JBIEBHC



instagram.com/JBIEBHC

© The University of Adelaide.

Published 2021

GRICOS 00123M

DISCLAIMER The information in this publication is current as at the date of printing and is subject to change. You can find updated information on our website at adelaide.edu.au or contact us on 1800 061 459. The University of Adelaide assumes no responsibility for the accuracy of information provided by third parties.